

KIWI AUCTIONS

*Presents a Postal Auction
of Whisky & Brewery
Advertising Wares*



February 18th 2007

TERMS & CONDITIONS OF SALE

1. This is a minimum bid Absentee Auction, all bids will be handled as if you were present at the Auction, you can submit your bids by telephone, fax, email or by post using the bidding form enclosed.

2. Guarantee, We guarantee the descriptions of all items in this catalogue. Any item found to have damage or faults not described may be returned for a full refund within 45 days of the close of the sale. However any manufacturing flaw that does not significantly detract monetarily from the value of the item being sold will not be considered for a refund.

3. Bidding, You may submit your bids using any of the above methods any time after receipt of this catalogue. You may also contact us any time during the auction to check on your bid or find out what the current high bid is on any item. At this time you may raise your bid if you wish. The following scenario is how our absentee system works:

Suppose you wish to bid on lot 123 and advise us your bid of \$300 on this lot. At the same time another collector who also desires lot 123 bids \$200, then we will post the high bid at \$220. This will be your bid, i.e. 10% higher than the other bid of \$200. If no other bids are received on lot 123 then you will be the successful bidder at \$220 not the \$300 you were prepared to pay.

The highest bidder shall be determined by Kiwi Auctions, in the case of any disputes Kiwi Auctions shall have the final discretion in determining the successful purchaser.

At no time will Kiwi Auctions or it's agents divulge the amount of the maximum bid we have received that may be higher than the current posted high bid.

The following are how each bid will be raised :

Simply a 10% increment on the bid received below your bid, or in the case of you being the only bidder on a lot then your bid will be successful at the reserve price.

4. Call Back Service, You can request this service by filling in the appropriate box on the bidding form or by verbal agreement by telephone. However this service is only available on lots with a reserve value of NZ\$500 or more. The same bidding conditions as described in clause 3 above will apply. All "Call Back" telephone calls are paid for by Kiwi Auctions Ltd.. Given the diverse time zones of our customers it may take several days for all "Call Back" bids to be completed. Please note that you will never be told what your competitors high bid is during the bidding. Where possible please provide us with home, work or mobile numbers and the best time to contact you.

ALL BIDDING IS IN NEW ZEALAND CURRENCY

5. Closing the Auction: all bids must be in our hands by Telephone, post, fax or email by closing time of 10.00pm February 18th 2007 (New Zealand Time). We anticipate many calls on the last day so please place your bids early. In the case of a tied bid the successful purchaser will be the bidder whose bid was received first.

6. Reserves: these are the amount on the left hand side of each lot, no bids will be accepted below these levels.

7. Terms: After the sale we **PACK** all successful purchases and **THEN WE WILL NOTIFY YOU** of the total cost including **POSTAGE & PACKAGING**. Because this sale is totally absentee we ask for your patience for approx. 14 days. Once notified you will have only one account to pay.

8. Buyers Premium: There is a 10% buyers premium which is added to the purchase price. GST will be added to the premium only for NZ residents

9. Prices realised: Catalogue subscribers will automatically receive results by post after the sale.

10. Payment: once notified of your successful purchases payment in **NEW ZEALAND DOLLARS** or in your currency (after obtaining an amount from Kiwi Auctions) must be received within 21 days. Late payment will incur additional charges. Payment by Visa or Mastercard will incur a 2% surcharge to cover bank costs.

11. Foreign Exchange: We can now accept your personal cheque in your currency for payment, please enquire after the auction has ended for the amount due in your currency. Please note that the rates below are subject to constant change.

Indicative rates of exchange at time of printing were: (actual rate will be calculated on the day of payment)

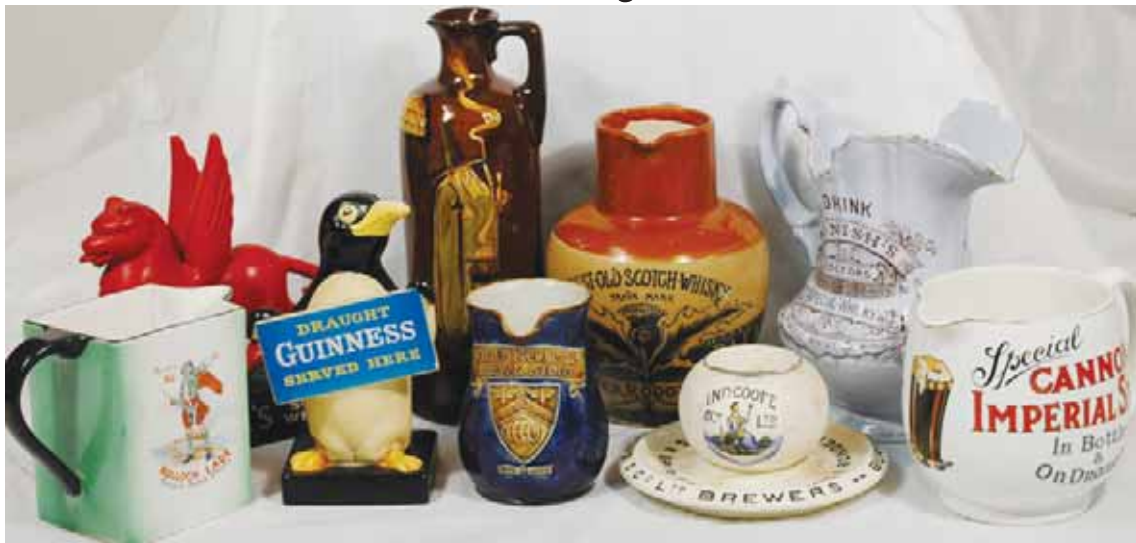
| | | |
|-----------|-------------|----------|
| Australia | \$1.00 buys | NZ\$1.13 |
| England | £1.00 | NZ\$2.85 |
| USA | \$1.00 | NZ\$1.50 |

KIWI AUCTIONS

presents

**An Absentee Auction of Whisky &
Brewery Memorabilia**

February 2007



KIWI AUCTIONS LTD

13 Summermist Drive Howick Auckland 2013 New Zealand

Telephone: +64 29 206 2000 Fax: +64 9 533 3584

Email: kiwi.auctions@xtra.co.nz

Website: www.kiwiauctions.co.nz



1 2



3 4



7 8



5 6



9 10 11 12



15 16 17



13 14



18 19 20

1. BALLARAT BERTIE

22ins tall, solid plaster figure, words in black to plinth "BERTIE THE CELLAR MAN", with labeled beer bottle, minor wear and small edge chip to back stand, a rare original Australian iconic figure, Very Good.
R\$1650 (1750 - 2500)

2. USHERS

16.75ins tall, solid plaster, "USHERS GREEN STRIPE SCOTCH", with glass bottle of Ushers, very minor paint scuffs, there is a crack in the plaster hidden when the bottle is in place, Good.
R\$500 (600 - 750)

3. BEEFEATER

16.5ins tall, ceramic figure, "THE BEEF-EATER YEOMAN", minor nick off hat and base edge, Cornetti Italy pm, Very Good.
R\$100 (125 - 150)

4. MARTINS

14.5ins tall, plastic figure, raised letters to plinth "MAKE MINE MARTIN'S", Hartland plastics USA, a very rare figure, Very Good.
R\$350 (400 - 500)

5. VANSCHAEUTER

12ins tall, ceramic figure, "BARON VON SCHEUTER", distillers marks and made by

Regal China to rear, this is Schnapps drink, Very Good.
R\$250 (300 - 400)

6. CAPTAIN MORGAN

12ins tall, rubberoid, raised letters "CAPTAIN MORGAN RUM", minor touch ups, Good.
R\$45 (60 - 90)

7. MACKINLAY'S

14ins tall, rubberoid on wooden base, letters painted on have worn, peeled, "MACKINLAY'S SCOTCH WHISKY", shrinkage/damage to hands and arms, Good.
R\$75 (100 - 150)

8. GILBEY'S

13ins tall, solid plaster figure, "GILBEY'S SPEY ROYAL SCOTCH", some paint touch ups, Very Good.
R\$250 (300 - 400)

9. BULLOCHLADE

6ins tall, solid plastic, "BL GOLD LABEL SCOTCH WHISKY", Very Good.
R\$75 (80 - 120)

10. TRUMAN'S

6ins tall, solid plastic, "TRUMAN'S BREWERS OF GOOD BEER FOR OVER 300 YEARS". Very Good.
R\$125 (130 - 150)

11. PIPER EXPORT

7ins tall, rubberoid, "PIPER EXPORT", very good.
R\$100 (110 - 140)

12. GUINNESS

7ins tall, plastic, "DRAUGHT GUINNESS

SERVED HERE", Very Good.
R\$75 (80 - 120)

13. CAPTAIN MORGAN

12ins tall, ceramic figure on wooden base, "CAPTAIN MORGAN ORIGINAL SPICED RUM", Very Good.
R\$275 (300 - 400)

14. CATTO'S

11.75ins tall, ceramic figure, 'CATTO'S THE SPORTSMANS SCOTCH WHISKY', Beswick pm, Very Good.
R\$650 (700 - 900)

15. GRANT'S

10ins tall, rubberoid, "GRANTS SCOTCH WHISKY". Very Good.
R\$125 (175 - 200)

16. BREWMASTER

9.5ins tall, ceramic, "PICK FLOWERS BREWMASTER", Carltonware pm, fine crazing, Very Good.
R\$125 (150 - 200)

17. HENNESSY

10ins tall x 12ins long, rubberoid, "HENNESSY", letters retouched, Good.
R\$175 (200 - 250)

18. AINSLIE'S

7ins tall, rubberoid, "AINSLIE'S SCOTCH WHISKIES", base has been filled in, tail restuck, Good, a rare figure.
R\$150 (175 - 250)

19. KING GEORGE IV

8ins tall, plastic, "KING GEORGE OLD SCOTCH WHISKY", letters retouched, Good.
R\$60 (75 - 90)

20. MARTELL

7.5ins tall, ceramic, "MARTELL BRANDY", fine crazing, Carltonware pm, Very Good.
R\$175 (200 - 250)



21

22

23



27

28

29



24

25

26



30

31

32

R\$1000

(1200 – 1500)



33

34

35

29. KING GEORGE

7.75ins tall, cobalt blue top, with handle, "KING GEORGE SCOTCH WHISKY", Royal Doulton pm, Very Good. R\$300 (350 – 450)

30. QUEEN'S CLUB

7.5ins tall, no handle, cobalt blue top, "QUEEN'S CLUB SCOTCH WHISKY", Buchan Portobello pm, Very Good. R\$200 (250 – 350)

31. MACKINLAY'S

8ins tall, with handle, all over thistle decoration, "MACKINLAY'S VERY OLD SCOTCH WHISKY", on raised panel, Royal Doulton pm, Very Good. R\$350 (400 – 500)

32. JRD

7.5ins tall, with handle, "JRD FINE OLD SCOTCH WHISKY" in raised letters, Royal Doulton pm, Very Good. R\$300 (350 – 400)

33. DEWAR'S #1

11.5ins tall, with handle, the largest version!, "DEWAR'S PERTH WHISKY", detailed picture of the scene titled "WHISKY OF HIS FOREFATHERS", Doulton Lambeth pm, Very Good. R\$500 (600 – 900)

34. DEWAR'S #2

9.5ins tall, with handle, "DEWAR'S PERTH WHISKY", detailed picture of the scene titled "WHISKY OF HIS FOREFATHERS", Royal Doulton pm, Very Good. R\$400 (500 – 600)

35. JOHN DEWAR

5.5ins tall, with handle & original stopper, "JOHN DEWAR & SON'S PERTH", with pictures of Robbie Burns & Perth countryside, Royal Doulton pm, Very Good. R\$250 (300 – 400)

STONEWARE WHISKY BOTTLES

21. DUNDASHILL

7ins tall with handle, "DUNDASHILL PURE MALT OLD SCOTCH WHISKY", Grosvenor Glasgow pm, a very rare offering, Near mint. R\$2500 (3000 – 3500)

22. WATSON'S

7ins tall, with art deco styled handle "WATSON'S SCOTCH", made by Shelley Late Foley Pastello, this was the art department of Shelley, a very rare item, most likely made for the centenary in 1915, has a picture of a cottage with smoke coming out of the chimney. Very Good. R\$2500 (3000 – 4000)

23. CATTO'S

8.75ins tall, no handle, "CATTO'S OLD HIGHLAND WHISKY PARIS EXHIBITION 1878", a very previously unrecorded shape, Port Dundas pm, Very Good. R\$1000 (1500 – 1750)

24. ROBERT BURNS

8ins tall, with handle, "ROBERT BURNS

COTTAGE AYR", with detailed print of his cottage, Royal Doulton pm, Near Mint. R\$1000 (1200 – 1500)

25. CHESHIRE CHEESE

9ins tall, with handle "YE OLD CHESHIRE CHEESE", detailed picture of the famous London pub, Doulton Lambeth pm, Very Good. R\$250 (300 – 400)

26. KING GEORGE

8ins tall, with handle, "KING GEORGE LIQUEUR WHISKY", Royal Doulton pm, Very Good. R\$200 (250 – 350)

27. GRANT'S

9ins tall, with handle & original stopper, raised letters on shield "GRANT'S LIQUEUR", age crazing, no pm, Very Good. R\$75 (100 – 140)

28. LOFFET

7ins tall, with handle, cobalt blue top, "LOFFET & CO CHOICE OLD SCOTCH WHISKY", with all over wheat sheaves decoration, Royal Doulton pm, Very Good.



36

37

38



42

43

44

36. AULD LANG SYNE

11.75ins tall, with handle, a massive jug, "AULD LANG SYNE", with detailed picture of 3 Gents drinking, H.Kennedy pm, potstone hole to rear, Very Good. R\$750 (800 – 1000)

37. AULD LANG SYNE

9ins tall, with handle, "AULD LANG SYNE", with detailed picture of 3 Gents drinking, H.Kennedy pm, Very Good. R\$500 (800 – 1000)

38. BONNIE CASTLE

8.5ins tall, with handle, "THE CREAM OF OLD SCOTCH WHISKEY BONNIE CASTLE", with detailed picture of a palace, no pm, Very Good. R\$200 (250 – 350)

39. CRAYTHUR

7.75ins tall, with handle, "CRAYTHUR ERIN GO BRAGH", Port Dundas pm, Very Good. R\$300 (400 – 500)

40. TAPPIT HEN

6.75ins tall, with handle, "THE TAPPIT HEN HAWTHORN DEW", this is much smaller than normal, Rare, Port Dundas pm, Very Good. R\$300 (400 – 500)

41. MY QUEEN

7.5ins tall, with handle, "THE CREAM OF HIGHLAND WHISKIES MY QUEEN JUBILEE BLEND", with sepia print and pictures of Queen Victoria, Port Dundas pm, Very Good. R\$150 (200 – 300)



39

40

41



45

46

47



48

49

50

42. CRUISKEENLAWN

8ins tall, with handle, RED PRINT "CRUISKEENLAWN MITCHELLS OLD IRISH WHISKY", Grosvenor pm, potstone hole to side, Very Good. R\$600 (700 – 800)

43. GRANT'S LIQUEUR

8.75ins tall, with handle, all over Art Nouveau decoration, "GRANT'S LIQUEUR", in raised letters, Royal Doulton & Distillers marks to base. Very Good. R\$400 (500 – 600)

44. CRUISKEENLAWN

7.5ins tall, with handle, "CRUISKEENLAWN MITCHELLS OLD IRISH WHISKY", H.Kennedy pm, lip chip, Very Good. R\$100 (120 – 180)

45. GLENCOE

7ins tall, with handle, "GLENCOE DISTILLERY SCOTCH MALT WHISKY", no pm, Very Good. R\$275 (300 – 400)

46. HIBERNIAN

7.5ins tall, with handle, "THE HIBERNIAN OLD IRISH WHISKY", H.Kennedy pm, all over glaze cracking and some discolouration and a ding to the neck, a rare item in poor shape. R\$300 (350 – 450)

47. ARKWRIGHT CLUB

7.5ins tall, with handle, "ARKWRIGHT CLUB", with picture of Mr. Arkwright?, M.Shaw New York in red print on base, fine crazing, Very Good. R\$150 (200 – 250)

48. STRATHMORE

8ins tall, with handle, "15 YEARS OLD STRATHMORE SPECIAL LIQUEUR SCOTCH WHISKY", Castle scene, H.Kennedy pm, Very Good. R\$800 (900 – 1200)

49. BRAEMAR

7ins tall, with handle, RED PRINT "BRAEMAR", black print "FINEST OLD SCOTCH WHISKY", Port Dundas pm, Very Good, Rare. R\$500 (600 – 700)

50. GILLON

8.25ins tall, with handle and pouring spout, "V.O.P. SCOTCH WHISKY JOHN GILLON LEITH & LONDON", no pm, Very Good. R\$250 (350 – 450)

51. ROYAL BLEND

7.5ins tall, with handle, all over tropical decoration, with birds etc, "THE ROYAL BLEND WHISKY", H.Kennedy pm, lamp hole drilled into rear near base (does not detract), Very Good, Rare. R\$400 (500 – 600)



51

52

53



54

55

56

57



58

59

60



61

62

63

STONEWARE WATER JUGS



64

65

66

52. ROYAL BLEND

6.5ins tall, with handle, with Stag tm, rare smaller size, "THE ROYAL BLEND WHISKY", H.Kennedy pm, Very Good.
R\$250 (300 – 400)

53. PATTISON'S

7.75ins tall, with handle, "PATTISON'S SCOTCH" to sides with Coat of Arms tm, Buchan Portobello pm, Very Good.
R\$350 (400 – 500)

54. MITCHELL'S

4.75ins tall, with handle, miniature size, "CRUISKEEN LAWN MITCHELLS OLD IRISH WHISKY", no pm, Very Good.
R\$150 (170 – 200)

55. RODERICK DHU

4ins tall, with handle, miniature size "RODERICK DHU OLD HIGHLAND WHISKY", floral decoration all around, No pm, Very Good.
R\$175 (200 – 225)

56. SHOOLBRED

2.75ins tall, with handle, miniature size, "JAS SHOOLBRED TOTTENHAM HOUSE LONDON", cork stopper, no pm, fine crazing, Very Good.
R\$150 (175 – 250)

57. IVANHOE

2.75ins tall, with handle and internal thread (stopper missing), "IVANHOE SPECIAL SCOTCH", Very Good.
R\$150 (200 - 250)

58. JOHN DEWAR & SONS

5.5ins tall, with handle, "JOHN DEWAR & SONS DISTILLERS PERTH" Doulton Silicon Glaze with Egyptian decoration, Royal Doulton pm, Very Good.
R\$225 (275 – 350)

59. D.C.L

7ins tall, with handle, "D.C.L SCOTCH WHISKY" Doulton Silicon Glaze with Egyptian decoration, Doulton Lambeth pm, Very Good.
R\$300 (400 – 600)

60. ABBOTSFORD WHISKEY

9ins tall, with handle & pouring spout, 2 tone salt glazed "ABBOTSFORD WHISKEY" with picture of Mr. Abbotsford??. Doulton Lambeth pm, Very Good.
R\$700 (800 – 1000)

61. THORNE'S

5.5ins tall, with handle, Cobalt blue top, "THORNE'S WHISKY" Royal Doulton pm, Very Good.
R\$600 (800 – 100)

62. KING'S RANSOM

7.75ins tall, with handle, "KING'S RANSOM ROUND THE WORLD" Coat of Arms to centre, Doulton Lambeth pm, Very Good.
R\$800 (900 – 1200)

63. USHER'S

4ins tall, with handle, Cobalt blue top "USHER'S SCOTCH WHISKY" to both sides, Royal Doulton pm, repair to lip chip (ok), Good.
R\$300 (400 – 500)

64. THORNE'S

7.75ins tall "THORNE'S SCOTCH WHISKY", with applied Lion Rampant tm and Harvester Scenes to body. Handle to rear, Doulton Lambeth pm, Very Good.
R\$800 (900 – 1200)

65. OLD READING ABBEY

7.75ins tall with handle, 2 tone flared top & bottom, elaborate picture of 3 Monks seated around a table, "OLD READING ABBEY SCOTCH & IRISH WHISKY" no pm, minor rim chip professionally restored, Very Good, Rare.
R\$1500 (1750 – 2000)

66. SLATER RODGER

7ins tall with handle, 2 tone, "FINEST OLD SCOTCH WHISKY THISTLE BLEND SLATER RODGER & CO" with picture of large thistle in centre, H Kennedy pm, a rare pictorial, Very Good.
R\$1200 (1300 – 1600)



67

68

69



73

74

75



79

80

81

67. D.C.L

6.5ins tall with handle, "D.C.L. SCOTCH WHISKY" applied lettering and harvest scenes, Royal Doulton pm, professional repair to rim chip, Very Good.
R\$450 (500 – 700)

68. HOUSE OF LORDS

6.5ins tall, with handle, Sepia print, "HOUSE OF LORDS WHISKY" Port Dundas pm, Very Good, professional repair to rim chip, Good.
R\$300 (400 – 500)

69. HAIG & HAIG

5.75ins tall, with handle, "HAIG & HAIG DISTILLERS SINCE 1679 WHISKY" no pm, minor chip to rim and spout repaired (average), Good.
R\$125 (150 – 200)

70. DEWARS

5.25ins tall, with handle, applied Harvest ware decoration in white relief "DEWARS WHISKY" Royal Doulton pm, repair to rim chip (ok), Good.
R\$125 (150 – 200)

71. DEWARS

6.5ins tall, with handle, applied words to body "DEWARS PERTH WHISKY" and transferred words to front "JOHN DEWAR & SONS PERTH. Doulton Lambeth pm, Very Good.
R\$300 (400 – 500)

72. DEWARS

5.75ins tall, black print "DEWAR'S WHISKY" handle to rear, Royal Doulton pm, Mint
R\$225 (250 – 300)

73. DEWAR'S

4ins tall, with handle, applied Harvest ware decoration in white relief "DEWAR'S WHISKY" Royal Doulton pm, Very Good.
R\$250 (300 – 400)

74. QUEENANNE

4ins tall, with handle, "QUEEN ANNE SCOTCH WHISKY RARE & EXQUISTITE" black lettering, Made in Scotland pm, Very Good.
R\$250 (300 – 350)

75. HAIGS

4ins tall, with handle, 2 tone black print, "HAIGS DISTILLERS SINCE 1679 WHISKY" Doulton Lambeth pm, Mint
R\$250 (300 – 400)



70

71

72



76

77

78

DECANTERS

76. WATSONS

11.5ins tall to top of original stopper words around shoulder "WATSONS No 10 WHISKY" Cameo pictures of HMS New Zealand, Sir John Jellicoe, and HM Sydney, Made in England and distiller marks to base. Very Good.
R\$600 (700 – 900)

77. WATSONS

11 ins tall, picture of Lord Kitchener and Duke of Wellington to sides "JAS WATSON & COLTD DISTILLERS EST.1815 CENTENARY SOUVENIR 1915" in shield to front Made in England and Distillers to base. Stopper is new, Very Good.
R\$450 (500 – 600)

78. WATSONS

11.5 ins tall to top of original stopper, words around shoulder "WATSONS WHISKY 1815 – 1915" pictures of RT Hon H H Asquith and HM King George V to sides. Made in England and distillers marks to base. Very Good.
R\$800 (900 – 1000)

79. USHERS

10ins tall to top of Crown styled stopper, words on blue background, "A Souvenir of King George & Queen Mary's Visit. Applied decoration with cameo pictures of the King & Queen. Copeland Spode pm. Very Good.
R\$200 (250 – 300)



82

83



87

88

89

80. BUCHANAN'S

9.5ins tall to top of stopper, applied words "BUCHANAN WHISKY" applied decoration with cameo pictures of WW1 scenes. Copeland and distiller marks to base. Minor nick to underside of helmet stopper, Good.
R\$250 (300 - 400)

81. BENEAGLES

10.5ins tall, ceramic modeled decanter of an Eagle, "BENEAGLES SCOTCH WHISKY" Beswick pm and distillers marks to base. Lettering to plinth is not original (can be removed if required), Very Good.
R\$50 (75 - 125)

82. GRANTS

7.5ins tall, Figural Head of William Grant Character Jug in presentation box and is full and sealed. "GRANTS 25 YEAR OLF VERY RARE SCOTCH WHISKY" made by Royal Doulton, has the 4 barrel handle, with the ceramic pouring stopper. Good.
R\$250 (275 - 300)

83. JOHNNIE WALKER

11.25ins tall, modeled milk glass decanter of Johnnie Walker. No pm Good.
R\$50 (75 - 125)

KINGSWARE

84. PARSON BROWN

7ins tall, AIRBRUSHED, with central picture of PARSON BROWN, Royal Doulton pm & D5718 to base. Very Good.
R\$175 (200 - 300)

85. McCALLUM 6.5ins tall, character water jug, titled "THE McCALLUM" to sides, made for D&J McCALLUM Distillers Edinburgh. A limited edition jug of just 1000 - 1500. Circa 1930. Royal Doulton pm, Fine crazing, Very Good.
R\$1250 (1300 - 1500)

86. CROWN

7ins tall to top of repro stopper, a limited edition of just 650 in 1937 to commemorate the Coronation of George VI, Royal Doulton pm with Dewars Whisky. Very Good.
R\$450 (500 - 700)

87. WATCHMAN

10.5ins tall modeled head, with transfer print of the Watchman. Major body cracks, displays ok, Royal Doulton pm to base.
R\$100 (125 - 150)



84

85

86



90

91

92

88. GEORGE THE GUARD

9.75ins tall, titled "GEORGE THE GUARD" with George holding a Blunderbuss, to rear "DEWAR'S SCOTCH WHISKY" in raised lettering. Royal Doulton pm. Very Good.
R\$400 (500 - 700)

89. WIZARD

9.75ins tall, picture of a Wizard holding a potion, Royal Doulton pm. Professional repair to small chip on handle, Very Good, Rare.
\$1200 (1500 - 1750)

90. HERE'S HEALTH

9.75ins tall, picture of a Gent toasting the King, tilted "HERE'S A HEALTH UNTO HIS MAJESTY" Royal Doulton & Dewars marks to base. Very Good.
R\$700 (800 - 1000)

91. OYEZ OYEZ

10.25ins tall, picture of the Town Crier to one side with words in raised lettering "OYEZ OYEZ" & to rear in piping "DEWAR'S SCOTCH WHISKY" Royal Doulton pm. Very Good.
R\$500 (600 - 700)

92. CHURCHWARDEN

10ins tall, picture of gent smoking a pipe, to rear raised lettering "DEWAR'S SCOTCH WHISKY" Royal Doulton pm. Very Good.
R\$500 (600 - 800)



93

94

95



99

100

101



105

106

107

93. CONNOISSEUR

8.5ins tall, with handle, picture tilted "THE CONNOISSEUR" Royal Doulton pm. Very Good, Rare
R\$1500 (1600 – 1800)

94. ALCHEMIST

8ins tall, detailed picture of Monk in Cellar sampling the wine. Signed Noke. Royal Doulton pm. Fine crazing, Very Good.
R\$1100 (1200 – 1400)

95. ARKWRIGHT

9ins tall, with handle, picture tilted "RICHARD ARKWRIGHT 1732-1792" with elaborate picture in gold lettering of the invention the Spinning Frame, Royal Doulton pm, Very Good.
R\$900 (1000 – 1200)

96. FALSTAFF

7.5ins tall, with repro Dewars stopper, picture of "FALSTAFF" in raised lettering, Royal Doulton & Dewars marks to base. (Brown Hat version), Very Good.
R\$300 (400 – 500)

97. FALSTAFF

7.25ins tall, picture of "FALSTAFF" raised lettering to rear "DEWARS SCOTCH WHISKY" Royal Doulton pm to base. (Green Hat version), fine crazing, Very Good.
R\$300 (400 – 500)

98. JOVIAL MONK

7.5ins tall, with repro stopper, Flattened round shape, wit picture of "THE JOVIAL MONK" to front, with Dewars Whisky and Royal Doulton marks to base. Very Good.
R\$300 (400 – 500)

99. ADMIRAL BEATTY

7.5ins tall, with handle, picture of "ADMIRAL BEATTY" with "DEWARS" in yellow raised letters to rear, Royal Doulton pm. Fine crazing, Very Good.
R\$450 (500 – 700)

100. MONARCH OF THE GLEN

7.25ins tall, with handle, picture of a Stag, with an antler styled handle, lettering to rear "DEWARS WHISKY", Royal Doulton pm to base. Very Good.
R\$600 (700 – 900)



96

97

98



102

103

104



108

109

110

101. NELSON

7.75 ins tall, flattened round shape, with picture of Lord Nelson to front "DEWARS" in yellow raised letters to rear. Royal Doulton pm. Minor chip to base edge, Very Good.
R\$300 (400 – 600)

102. BONNIE PRINCE CHARLIE

7ins tall, with repro Dewars stopper, picture of Bonnie Prince Charlie, with "DEWARS" to rear in large raised letters, Royal Doulton pm, Very Good.
R\$200 (300 – 400)

103. SYDNEY HARBOUR

6.25ins tall, with handle, picture of "SYDNEY HARBOUR" with large black print "DEWARS" to rear, Royal Doulton pm, fine crazing, Very Good.
R\$600 (700 – 900)

104. PEACE

7ins tall, green background detailed transfer print to front of Britannia and in black print to rear "DEWAR". Royal Doulton pm, fine crazing, Very Good.
R\$500 (600 – 700)

105. GEORGE THE GUARD

8ins tall, titled "GEORGE THE GUARD" with picture of George holding a Blunderbuss, Royal Doulton & Dewars marks to base, Very Good.
R\$300 (400 – 500)



111

112

113



117

118

119



114

115

116



120

121

122

106. BEEFEATER

7.25ins tall, globular shaped with picture of a Beefeater, has yellow raised letters "DEWAR'S SCOTCH WHISKY" to rear. Royal Doulton pm, professional lip repair, Very Good.
R\$500 (600 – 700)

107. SPORTING SQUIRE

8ins tall, pear shaped with picture of the Sporting Squire, Royal Doulton & Dewars marks to base. Very Good.
R\$250 (300 – 400)

108. MONK IN CELLAR

8.25ins tall, detailed picture of Monk in Cellar sampling the wine. Royal Doulton pm, professional repair to minor nick off rim, Very Good.
R\$500 (600 – 700)

109. OYEZ OYEZ

8ins tall, with repro Dewars Stopper, picture of the Town Crier to one side with words in raised lettering "OYEZ OYEZ" Royal Doulton & Dewars pm. Has the signature for Noke, Very Good.
R\$400 (500 – 700)

110. TONY WELLAR

8ins tall, detailed picture of the coachman Tony Wellar and titled, "TONY WELLAR BEVARE OF THE VIDDERS" and to rear "DEWAR'S IMPERIAL". Royal Doulton pm, professional lip repair, Very Good.
R\$225 (250 – 350)

111. WATCHMAN

8ins tall, modeled head, with a repro Dewars stopper, with transfer print of the Watchman with staff over shoulder & carrying a lantern, Royal Doulton pm, fine crazing, minor surface scuff mark, Very Good.
R\$350 (400 – 500)

112. HE'S A JOLLY GOOD FELLOW

8ins tall, picture of many happy gents and titled "HE'S A JOLLY GOOD FELLOW" Royal Doulton pm. 2 chips on the spout have been repaired some time ago with the old staple method, Good.
R\$500 (600 – 700)

113. GOLFER

8ins tall, with repro Dewars stopper, central picture of Golfers in action, and to rear a Golfer in full swing, signed Noke, Royal Doulton pm. Fine crazing, Very Good.
R\$1100 (1200 – 1500)

114. BEN JONSON

7.5ins tall, with a repro Dewars stopper, raised words to front "BEN JONSON" Words in raised lettering to rear "DEWARS SCOTCH WHISKY" Royal Doulton pm, fine crazing, Very Good.
R\$200 (250 – 350)

115. JOVIAL MONK

7.75ins tall picture of and titled "THE JOVIAL MONK" to front, and in raised lettering "DEWARS SCOTCH WHISKY". Royal Doulton & Dewars marks to base, professional repair to hairline in handle, fine crazing, Good.
R\$175 (200 – 250)

116. CAPTAIN PHILLIP

7.25ins tall, original stopper, picture of and titled "CAPTAIN PHILLIP" to front, to rear picture of Galleon Ship with "1788-1938". Royal Doulton & Dewars marks to base. Very Good.
R\$650 (700 – 900)

117. PIPE MAJOR

8.25ins tall, picture of "THE PIPE MAJOR" to rear yellow letters "DEWAR'S. Royal Doulton pm, fine crazing, Very Good.
R\$250 (300 – 400)

118. NELSON

8.5ins tall, with picture of Lord Nelson to front and impressed into the rear "NELSON", Royal Doulton & Dewars marks to base. Very Good.
R\$500 (600 – 700)

119. STIGGINS

8ins tall, picture of and titled "STIGGINS", shows an interior view of a room with decanters etc. Royal Doulton pm, minor lip chip professionally restored, Very Good.
R\$900 (1000 – 1200)

120. MICAWBER

7.25ins tall, picture of Mr. Micawber and titled "MICAWBER THE EVER EXPECTANT" part of original silver label to rear. Royal Doulton & Dewars marks to base. Very Good.
R\$275 (300 – 400)

121. MICAWBER

8ins tall to stopper, AIRBRUSHED version, picture of Mr. Micawber and titled "MICAWBER THE EVER EXPECTANT" Royal Doulton pm to base. Very Good.
R\$500 (600 – 800)

122. PICKWICK

8.5ins tall, to top of original ceramic stopper, QUEENSWARE, words to body, "MR PICKWICK FROM DICKENS" Royal Doulton pm. Very Good.
R\$800 (900 – 1200)



122A

123

124



128

129

130



137

138

139

122A. SPORTING SQUIRE

6ins tall, picture of the Sporting Squire, "DEWAR'S" in raised yellow letters to rear, Royal Doulton pm, Very Good. R\$225 (250 – 350)

123. TAVERN SCENE

6.25ins tall, twin handled vase, pictures of an Elizabethan Tavern scene to front and rear. Royal Doulton pm, repairs to one handle and lip chip (good), Good. R\$250 (300 – 400)

124. WATCHMAN

3.5ins tall, with handle, modeled head of the Watchman, Royal Doulton pm, professional repair to handle, Very Good. R\$900 (1000 – 1200)

CHINA WATER JUGS

125. AINSLIE'S

4ins tall, "AINSLIE'S WHISKY" with highly decorative pictures of Edinburgh Castle and National Gallery to sides. Copeland Pottery & Sir Joseph Causton and Sons London marks pm. Mint R\$500 (600 – 700)

126. AINSLIE'S

4.25ins tall, "AINSLIE'S WHISKY" with highly decorative pictures of Edinburgh Castle and National Gallery to sides. Copeland Pottery & Sir Joseph Causton and Sons London marks pm. Mint. R\$500 (600 – 700)

127. AINSLIE'S

4.75ins tall, lustre style glaze, yellow on the inside, "AINSLIE'S WHISKY" to 2 sides, recessed handle, Causton pm. Very Good. R\$375 (400 – 500)

128. AINSLIE'S

4.75ins tall, BLUE print "AINSLIES SCOTCH AS SUPPLIED TO THE ROYAL NAVY" to one side and to other "AINSLIES HAS RISEN TO THE TOP" with a detailed picture of a Submarine with a large bottle of Ainslies whisky on the bow. Words to inside of rim "AINSLIES EDINBURGH" Royal Doulton pm. Professional repair to lip chip, Very Good. R\$2500 (2750 – 3000)

129. AINSLIE'S

4.75ins tall, GREEN print "AINSLIES SCOTCH AS SUPPLIED TO THE ROYAL NAVY" to one side and to other "AINSLIES HAS RISEN TO THE TOP" with a detailed picture of a Submarine with a large bottle of Ainslies whisky on the bow. Words to inside of rim "AINSLIES EDINBURGH" Royal Doulton pm. Some internal stains, Good. R\$3000 (3500 – 4500)

130. BENLOVIT

5.75ins tall, black print "FAMOUS BENLOVIT WHISKY AS SUPPLIED TO THE LORDS" with gold rim. James Green & Nephew pm to base. Some staining to body, crazing, Rare, Good. R\$300 (400 – 600)

131. BUCHANAN'S

6.5ins tall, "BUCHANAN'S BLACK & WHITE WHISKY" picture of a Polo Player to both sides. Frank Beardmore & Co Fenton to base. Very Good. R\$1200 (1500 – 2000)



125

126

127



131

132

133



134

135

136

132. BUCHANAN'S

6ins tall, "BUCHANAN'S BLACK & WHITE" picture of a bird with prey. J.B.C. to base. Professional lip repair, crazing, Good. R\$2000 (2500 – 3000)

133. BLACK AND WHITE

4.75ins tall, "BLACK AND WHITE SCOTCH WHISKY" under spout. Elaborate picture of the Centennial Tower. "New Zealand Centennial Exhibition 1840 – 1940" to sides. Shelley pm, minor chip to spout professionally restored, Very Good. R\$1000 (1200 – 1500)

134. BUCHANAN'S

7.75ins tall, "BUCHANAN'S SPECIAL RED SEAL SCOTCH WHISKY" picture of hunt scene. Beardmore and Co Fenton pm to base. Minor hairline to rim (not near words) professionally restored, Very Good. R\$2250 (2500 – 3000)

135. BUCHANAN'S

7.75ins tall, "BUCHANAN'S SPECIAL RED SEAL SCOTCH WHISKY" picture of hunt scene. Beardmore and Co Fenton pm to base. Some light fade to print, light stains to base area, fine crazing, Good. R\$2000 (2250 – 2750)

136. BLACK AND WHITE

4.25ins tall, "SCOTCH WHISKY BLACK AND WHITE". Portrait of 2 dogs looking at each other on both sides within chequered border, Shelley pm, light wear and minor hairline to base, Good. R\$100 (125 – 150)



140

141

142



143

144

145



146

147

148



149

150

151



152

153

154

137. BLACK AND WHITE

4.75ins tall, "SCOTCH WHISKY BLACK AND WHITE" portrait of 2 dogs looking at each other on both sides within chequered border, Made in England pm, light wear, Very Good. R\$175 (200 - 300)

138. BLACK AND WHITE

5ins tall, "BUCHANAN'S BLACK AND WHITE SCOTCH WHISKY" chequer board black and white. Made in England pm, Very Good. R\$275 (300 - 350)

139. BLACK AND WHITE

4.25ins tall, "BLACK AND WHITE IT'S THE SCOTCH" 2 dogs and a bottle to both sides, rare small version, Shelley pm. R\$175 (200 - 300)

140. BALIE NICOL JARVIE

5ins tall, with handle, red & black print "BAILIE NICOL JARVIE" to sides, and picture of a bottle under spout, no pm, professional repair to minor chip on spout, some stains to top rim area, Good. R\$350 (400 - 500)

141. BULLOCHLADE

4.5ins tall, "BULLOCHLADE PEDIGREE SCOTCH WHISKY" MULTICOLOURED PICTURE OF Highlander with sword on both sides, Made in England pm, Rare, Very Good. R\$900 (1000 - 1500)

142. BULLOCHLADE

3.75ins tall, black print, yellow jug. "BULLOCHLADE" "BL" "THE PEDIGREE SCOTCH" to both sides and to front

picture of a Highlander. James Green & Nephew pm, Very Good. R\$275 (300 - 350)

143. JOHN BEGGS

5ins tall, "JOHN BEGG'S SCOTCH WHISKY" picture of Lochnager Distillery and Balmoral Castle to front of jug. To one side "Royal Warrants For Over 60 Years" the other side "all The Royal Palaces Supplied For Over 60 years" with large black John Begg bottle. Blue band around the top of rim. John Baird Port Dundas pm, minor fracture/ding to top of rim by handle, Very Good, Rare. R\$1500 (1750 - 2000)

144. BURKE'S

6.5ins tall, "BURKE'S DUBLIN WHISKEY" in red print on both sides of jug, Fielding pm, fine crazing, very Good (hard to get in good condition!). R\$450 (600 - 800)

145. CRAWFORD'S

7ins tall, "ASK FOR CRAWFORD'S C.C.C. OLD SCOTCH WHISKY" to one side and to other multicolour pictures of King Edward VII & Queen Alexandra for their Coronation in 1902. Fielding pm. Hairline running off rim, age crazing, Good. R\$1500 (1750 - 2000)

146. CLAYMORE

4.5ins tall, green print "CLAYMORE RARE OLD SCOTCH WHISKY" Royal Doulton pm, fine crazing, Very Good. R\$750 (800 - 1000)

147. CLAYMORE

6.5ins tall, green print "GREENLEES BROS CLAYMORE SCOTCH WHISKY" with Crown & crossed swords tm to both sides. Royal Doulton pm, Very Good. R\$950 (1000 - 1200)

148. D.C.L.

5.75ins tall, "D.C.L GOLD MEDAL SCOTCH WHISKY" to sides, Royal Doulton pm, professional repair to rim chips, Very Good. R\$400 (450 - 600)

149. DEWAR'S

3.25ins tall, "DEWAR'S WHITE LABEL" to sides, Mintons pm, light stains with age crazing, Good. R\$50 (75 - 100)

150. DEWAR'S

5ins tall, "DEWAR'S WHISKY", in blue print to sides, gold trim to rim & handle, Maddock pm, Very Good. R\$125 (150 - 200)

151. DUNVILLE'S

5.5ins tall, with recessed handle, to one side "DUNVILLE'S VR WHISKY" with Crown tm, to other "DUNVILLE'S SPECIAL LIQUEUR WHISKY", with 3 Crowns tm, and under spout "ASK FOR IT AND SEE YOU GET IT", J.A. Campbell Belfast, gold trim to rim is worn, Very Good. R\$450 (500 - 700)

152. ENCORE

6.5ins tall, "ASK FOR THE ENCORE WHISKY" in bold Gold & black lettering to one side of jug, Cranston Elliot Edinburgh pm, dirty crazing (light), light wear, faint star crack near base, Good. R\$300 (350 - 400)

153. GREER'S

4ins tall, "GREERS OVH SCOTCH WHISKY", Made in Scotland pm, gold trim to rim & handle, fine crazing, Very Good. R\$200 (250 - 3000)

154. GREER'S

4.75ins tall, "GREERS OVH SCOTCH WHISKY", to sides, Shelley pm, Very Good. R\$200 (250 - 300)



155

156

157



158

159

160



161

162

163



164

165

166



167

168

169



170

171

172

155. GRANT'S

5.5ins tall, triangular shape, gold print "GRANT'S LIQUEUR WHISKY", Clifton Cottle pm, Very Good. R\$175 (200 – 300)

156. GRANT'S

3.5ins tall, all over Light Blue & White, "GRANT'S STANDFAST WHISKY", James Green Nephew pm, Very Good R\$225 (250 - 300)

157. HARVEY'S

3.25ins tall, unusual side pourer action, "HARVEY'S SPECIAL WHISKY", with red stripe to sides, Carltonware pm, professional rim repair, Good. R\$150 (175 – 250)

158. GAELIC

7ins tall, "GAELIC OLD SMUGGLER WHISKY" Stirling Bonding Coy Stirling. Scotland on both sides of jug, front of jug has picture of Craiggellachie-Glenlivet Distillery Scotland. Royal Doulton pm, very minor lip chip professionally restored, a very rare item, Very Good. R\$1500 (1750 – 2500)

159. GAELIC

6.5ins tall, "GAELIC OLD SMUGGLER WHISKY" Stirling Bonding Coy Stirling. Scotland on both sides of jug, front of jug has picture of Craiggellachie Distillery Scotland. Royal Doulton pm, professional repairs to rim and base edge, Very Good. R\$1500 (1750 – 2500)

160. KING GEORGE

4.5ins tall, multicoloured print, with a picture of the King and "KING GEORGE IV OLD SCOTCH WHISKY" to sides. No pm, minor fleabite to base edge, gold trim to rim & handle, crazing. Very Good. R\$300 (400 – 500)

161. KING GEORGE IV

7.5ins tall, "TOP NOTCH KING GEORGE IV WHISKY" to two sides of jug, no pm, professional repair to minor chip off base edge below handle, Very Good. R\$275 (300 – 350)

162. KING GEORGE IV

6ins tall, "KING GOERGE IV TOP NOTCH SCOTCH WHISKY", with orange Crown tm to sides, Royal Doulton pm, Very Good. R\$600 (700 – 900)

163. KING GEORGE IV

5.5ins tall, "TO THE MEMORY OF HIS LATE MAJESTY KING GEORGE THE IV" to one side, head and shoulders of King George on one side in black, centre in red lettering and Coat of Arms "With the compliments of the Proprietors of King George IV Old Scotch Whisky". Elaborate handle & Floral decoration, Royal Doulton pm, fine crazing, Very Good. R\$375 (400 – 500)

164. KING GEORGE IV

4.25ins tall, "KING GEORGE IV OLD SCOTCH WHISKY" colourful Lawson Wood prints to sides titled "SAY WHEN MAN!! And to other "I SAID STOP – AND HE TOPPIT!" Royal Doulton pm, Mint R\$375 (400 – 500)

165. KING GEORGE IV

4ins tall, "KING GEORGE IV OLD SCOTCH WHISKY" with Crown tm to both sides. Shelley pm, minor wear to body, minor wear, Very Good. R\$200 (225 – 275)

166. KING GEORGE IV

5ins tall, "TOP NOTCH KING GEORGE IV OLD SCOTCH WHISKY" with Crown tm to both sides. Distiller's Agency to base, Very Good. R\$200 (250 – 300)

167. KINGS RANSOM

6.75ins tall, two tone, with blue top "KINGS RANSOM AROUND THE WORLD" with Coast of Arms and "WHITELEYS OF LEITH" No pm, Mint R\$375 (400 – 600)

168. McNISH

7.5ins tall, early Victorian shaped jug, "DRINK McNISH'S DOCTORS SPECIAL SCOTCH WHISKY THE MEDICAL WHISKY OF THE WORLD" to sides in brown print, Dunn Bennett pm, an early rare jug, Very Good. R\$1200 (1500 – 2000)

169. McCALLUM'S

6.5ins tall, character water jug, titled "THE McCALLUM" to sides, made for D&J McCALLUM Distillers Edinburgh. A limited edition jug of just 1000 – 1500, Circa 1930. Royal Doulton pm, Fine crazing, Very Good. R\$1200 (1500 – 1750)

170. McNISH

3.75ins tall, tartan body with green background, "McNISH" all over body, and to front "McNISH'S DOCTORS' SPECIAL WHISKY". Dudson Bros Handley England pm, Very Good. R\$250 (300 – 350)



173

174

175



179

180

181



185

186

187

171. McCALLUM'S

6ins tall, Cream 'McCALLUMS WHISKY IS PERFECTION' with central picture of Chieftain to sides. Royal Doulton pm, Very Good.
R\$350 (400 – 600)

172. MITCHELL'S

6ins tall, modeled character jug, "MITCHELL'S OLD IRISH WHISKY" to rim. No pm. Very Good, a rare Irish version of this style, minor paint specks missing to inside of rim and wear to his nose, Good.
R\$225 (250 – 300)

173. McNISH

3.25ins tall, tartan panels, white print, "McNISH" to both sides, and to front panels "McNISH'S SPECIAL SCOTCH WHISKY" Dunn Bennett pm, Very Good.
R\$150 (200 – 250)

174. McCALLUM'S

6ins tall, Powder Blue 'McCALLUMS WHISKY IS PERFECTION' with central picture of Chieftain to sides. Royal Doulton pm, professional lip repair, Good.
R\$275 (300 – 400)

175. OTARD

6.5ins tall, "OTARD'S FINE OLD BRANDY" to sides, and "OTARD DUPUY & Co ESTABD 1795 COGNAC" under spout with Coat of Arms, James Green Nephew pm, hairline to ice catcher professionally restored, fine crazing, Very Good.
R\$300 (400 – 600)

176. OLD CHARLIE

4ins tall with handle, "OLD CHARLIE FINEST JAMICA RUM" to sides with picture of an English Gent holding a bottle of Woods Old Charlie Rum, Fielding pm, professional repair to minor lip chip and base edge, Good.
R\$450 (500 – 700)

177. ROBERTSON'S

4.5ins tall, note this is a CHINA jug "ROBERTSON'S YELLOW LABEL SCOTCH WHISKY" to sides (print good) and "JOHN ROBERTSON & SON DUNDEE" under spout (faded a little). Made in England pm, Very Good.
R\$375 (400 – 500)

178. ROBERTSON'S

4.25ins tall, note this is the Enamel jug "ROBERTSON'S YELLOW LABEL SCOTCH WHISKY" to sides and "JOHN ROBERTSON & SON DUNDEE" under spout, no pm, Very Good.
R\$225 (250 – 300)

179. STRONACHIE

7.5ins tall, "STRONACHIE DISTILLERY PERTHSHIRE SCOTLAND" to one side with very detailed picture of the distillery, and to other "SANDY MACDONALD SCOTCH WHISKY" Royal Doulton pm, crazing as usual, Rare, Very Good.
R\$1500 (1750 – 2250)

180. JAMIE STUART

5.5ins tall, all over Blue & White Willow pattern "JAMIE STUART LIQUEUR SCOTCH" to sides, Made in England & Distillers marks to base, minor chip to inside of rim (not in the Blue & White) professionally restored, Very Good.
R\$375 (400 – 500)



176

177

178



182

183

184

181. WHITE HORSE

5ins tall, classic Blue & White jug with cameo picture to one side of a stage coach leaving an inn, with the words, "WHITE HORSE WHISKY" to other side, in oval, "WHITE HORSE WHISKY ESTAB 1742" background in Blue & White print of a Gent hunting to sides, Shelley pm, Very Good.
R\$1200 (1500 – 1750)

182. WHITE HORSE

6.25ins tall, "WHITE HORSE WHISKY" with White Horse tm, Regd Number to base, wear to silver gilt, minor inside chip to spout professionally restored, Very Good.
R\$325 (400 – 500)

183. WHITE HORSE

5.5ins tall, "WHITE HORSE WHISKY" with White Horse tm, Shelley pm. Wear to over glaze silver gilt on handle & rim, Very Good.
R\$325 (350 – 400)

184. WHITE HORSE

5ins tall, "WHITE HORSE WHISKY" with White Horse tm, Shelley pm. Very minor wear to silver gilt on handle & rim, Very Good.
R\$325 (350 – 400)

185. WATSON'S

4.5ins tall, "No 10 SCOTCH WATSON'S" on both sides of two tone blue jug. Distillers marks to base, minor paint spots missing, light wear to GOLD trim, some blotchiness (manufacturing) to body, rare small size, not seen before, Very Good.
R\$450 (500 – 700)

186. WATSON'S

6.5ins tall, "No 10 SCOTCH WATSON'S" to both sides of two tone blue jug. Made in England & Distillers marks to base, jug has seen better days, dull, dirty crazing, chip on spout, Average.
R\$125 (150 – 200)

187. WATSON'S

6.5ins tall, black print all over crackle design, "WATSON'S" to front and "BLUE BAND" to sides. Distiller's pm to base, light wear to bulbous base, professional repair to chip on rim by handle, Good.
R\$650 (700 – 900)



188

189

190



194

195

196



200

201

202

188. WATSON'S
5.5ins tall, "WATSON'S No 10 SCOTCH"
Overall blue lustre to body, Shelley pm,
wear to luster as usual, Very Good.
R\$350 (400 – 500)

189. WATSON'S
6.5ins tall, strong colours in all over floral
design "WATSON'S" to front and to
sides "No 10 SCOTCH" Made in England
& Distiller's marks to base, hard to find
without wear!, Very Good.
R\$700 (800 – 1000)

190. WATSON'S
5.5ins tall, "WATSON'S No 10 SCOTCH"
to sides, Made in England & Distillers
marks to base, inside rim chip profession-
ally restored, Very Good.
R\$450 (500 – 600)

191. HENERY WHITE
6.5ins tall, brown top and handle, cream
body, black print. "HENRY WHITE &
CO'S RED HEART RUM" to both sides
and to front detailed picture of 2
Jamaican's either side of a shield. Frank
Beardmore pm to base, professional
restoration to the rim, Very Good.
R\$750 (800 – 1000)

192. JOHNNIE WALKER
6ins tall, yellow body, black print, "LOOK
FOR JOHNNIE WALKER AND YOU'LL
FIND HIM EVERYWHERE" to 2 panels
and to other, "THE LABEL IS ON THE
SQUINT" and to remaining, "THE BOT-
TLE'S ON THE SQUARE" James Green &
Nephew pm, fine crazing, Very Good.
R\$1000 (1200 – 1500)

193. WRIGHT & GREIG
6ins tall, "WRIGHT & GREIG'S
RODERICK DHU OLD HIGHLAND

WHISKY" to sides. Wm Brownlee pm,
professional rim repair, crazing, an early
jug, Very Good.
R\$475 (500 – 600)

BREWERY JUGS

194. ALLSOPP'S
5ins tall, "ALLSOPP'S" with Red Hand tm
to one side and to other picture of 2 Gents
with verse about Allsopp's Ale, Royal
Cauldron pm, Very Good.
R\$125 (150 – 200)

195. GUINNESS
4.25ins tall, blue and black print, "BULL
DOG GUINNESS" to two sides and
"AKNOWLEDGED THE FINEST STOUT
IN THE WORLD" to other 2 sides, Royal
Doulton pm, Very Good.
R\$500 (600 – 800)

196. BODDINGTON'S
4.5ins tall, stoneware jug, applied decora-
tion "BODDINGTON'S BEER & STOUT"
with picture of a barrel tm, Royal Doulton
pm, a shrinkage crack to mid section of
handle (mfg), Very Good.
R\$375 (400 – 600)

197. BARCLAY'S
4.5ins tall, "BARCLAY'S LAGER
BARCLAY'S LONDON LAGER" with
orange shield tm, Clifton Cottle pm, fine
crazing, Very Good.
R\$300 (350 – 450)

198. CANNON IMPERIAL
4.75ins tall, "SPECIAL CANNON IMPE-
RIAL SPOUT IN BOTTLE AND ON
DRAUGHT" to both sides, full glass of
frothing stout pictured under spout, John
Haddock and Sons Royal Vitreous
England pm, light crazing, Very Good.
R\$900 (1000 – 1200)



191

192

193



197

198

199



203

204

205

199. IND COOPE
4.5ins tall, "IND COOPE ALLSOPP" with
picture of a building on one side & to
other a Red Hand, Mintons pm, Very
Good.
R\$250 (300 – 400)

200. MANSFIELD
3.75ins tall, "MANSFIELD ALES WORTH
HUNTING FOR" huntsman to one side,
and "MANSFIELD BREWERY CO LTD
GOLDEN DROPALE BITTER BEER AND
MILD ALE" to other, Made in England,
Very Good.
R\$275 (300 – 400)

201. WALKER'S FINE ALES
8.5ins tall, to one side "WITH COMPLI-
MENTS FROM ERNEST SILVERWOOD
CASHSUPPLY STORES RYHILL WALK-
ERS FINE ALES WAKEFIELD" to other
side multicoloured picture of King George
V & Queen Mary (1911 Coronation), no
pm, repairs to spout & rim, crazing, Good.
R\$400 (500 – 600)

202. OFFILER'S
3.75ins tall, "OFFILER'S ALES" to front
and pictures of King George VI and Queen
Elizabeth to one side with Crown and flags
to the other, no pm, fine crazing, Very
Good.
R\$275 (300 – 400)

203. WHITBREAD 1
4.75ins tall, 2 tone stoneware
"WHITBREAD'S ALE & STOUT IN
BOTTLE" Royal Doulton pm, Very Good.
R\$375 (400 – 500)

204. WHITBREAD 2
4.5ins tall, 2 tone stoneware tankard style
jug, "WHITBREAD'S ALE & STOUT"
with stage tm to sides, Royal Doulton pm,
Very Good.
R\$475 (500 – 600)

205. WHITBREAD 3
5.5ins tall, 2 tone stoneware,



206

207

208



209

210

211



212

213

214



215

216

217

Brewery & under spout "SCOTCH ALE"
Royal Doulton, Very Good.
R\$175 (200 – 250)

217. YOUNGER

3.75ins tall, "Wm YOUNGER'S No 3 SCOTCH ALE" to sides with picture of the Brewery & under spout "No 3" James Green Nephew pm, Very Good.
R\$175 (200 – 250)

GLASSDECANTERS ETC

218

219

220

"WHITBREAD'S ALE & STOUT IN BOTTLE" under spout, Royal Doulton pm, Very Good.
R\$475 (500 – 600)

206. FRED SMITH'S

4.5ins tall, "FRED SMITH'S ASTON MODEL ALES" 2 one side and to other multicolour image of a Gent cheeks aglow studying a glass of Ale, Causton pm, minor stain on rim, Good.
R\$275 (300 – 400)

207. WATNEYS

6ins tall, 6.75 wide, Plastic barrel, "WATNEYS" in black raised letters, paint has a crackle effect it (age), Good.
R\$85 (90 – 125)

208. COURAGE

4ins tall, "COURAGE ALTON PALE ALE" to one side & "COURAGE NUT BROWN ALE" with Rooster tm. Associated Potteries, dirty crazing, Good.
R\$250 (300 – 400)

209. GEORGES'

4ins tall, "GEORGES' BEERS" with picture of a horse on one side, to the other "WYLD'S "CROWN" SCOTCH" bold black letters, Poutney & Co Bristol pm, Very Good.
R\$400 (500 – 600)

210. GUINNESS

5.75ins tall, modeled figure of a seated Bulldog, "BULLDOG GUINNESS ROBT PORTER & Co" to one side and "BULLDOG PILSENER ROBT PORTER & Co", Royal Doulton pm, repairs to left front leg (good), Very Good.
R\$1200 (1500 – 2000)



221

222

223

211. WHITBREAD

5ins tall, "WHITBREAD THE BULLDOG", with a picture of a Bulldog, to one side. Copeland Spode pm, all over body stains, Good.
R\$150 (200 – 250)

212. DOUBLE DIAMOND

8ins tall, china figure of a striding gent, "A DOUBLE DIAMOND WORKS WONDER" to sides, Beswick pm, missing hat stopper, Very Good.
R\$225 (250 – 300)

213. TENNENTS

6.25ins tall, "TENNENT'S T BEER" black letters to front with red "T" tm, Possil Pottery pm, Very Good.
R\$150 (175 – 250)

214. YOUNGER

3.25ins tall, "GET YOUNGER EVERY DAY" to sides with picture of Mr. Younger & "W M YOUNGERS SCOTCHALE" under spout, Royal Doulton pm, Very Good.
R\$175 (200 – 250)

215. YOUNGER

4.25ins tall, to sides picture of Wm younger "Oi BE 101 AND YOUNGER EVERY DAY", under spout "WM YOUNGER NO 3 SCOTCHALE" with picture of the Brewery, Royal Doulton pm, wear to gold trim, Very Good.
R\$175 (200 – 250)

216. YOUNGER

4ins tall, "Wm YOUNGER'S No 3 SCOTCH ALE" to sides with picture of the

218. D.C.L.

9ins tall to top of stopper, white enamel lettering "VERY OLD SPECIAL D.C.L. SCOTCH WHISKY" glass dimpled squared decanter, pontil scar, Very Good.
R\$125 (150 – 200)

219. BLACK & WHITE

10.5ins tall to top of stopper that has a smiley face on it, with enamel words, "BLACK & WHITE SCOTCH WHISKY YOU ASKED FOR IT" transfer picture of Begging Dogs with pink tongues, Very Good.
R\$175 (200 – 300)

220. AINSLIE'S

8.5ins tall, carafe, with white enamel lettering "AINSLIE'S SCOTCH WHISKY AS SUPPLIED TO THE ROYAL NAVY JAMES AINSLIE & Co" with red Griffin tm, very Good.
R\$100 (150 – 200)

221. THOM & CAMERON

10.5ins tall to top of stopper, white & red lettering "THOM & CAMERON LTD RE-VATTED OLD HIGHLAND WHISKY GLASGOW" with etched Coat of Arms, Near Mint.
R\$225 (250 – 300)

222. WILLIAMS'S

7.75ins tall milk glass jug with handle and etched gold lettering, Coat of Arms under spout "WILLIAMS'S ABERDEEN WHISKY AS SUPPLIED TOKING EDWARD VII AND THE KING & QUEEN OF PORTUGAL", A very rare early item, there is a small 1" heat stress crack in the gap between the handles to rear, does not detract, Very Good.
R\$750 (800 – 1200)

223. DEWAR'S

10ins tall to top of stopper, etched gold print "DEWAR'S SCOTCH WHISKY" with Coat of Arms tm, 2 way pouring action, Very Good.
R\$150 (175 – 200)



224 225 226



233 234(2) 235(3)



242



243

ASHTRAYS STRIKERS ETC

224. IND COOPE

3ins tall x 6ins dia, coloured picture of Roman figure with black letters 'IND, COOPE CO LTD' to both sides of the top section, 'IMPORTER & BONDERS OF WINES & SPIRITS' to base and 'BURTON & ROMFORD IND COOPE & Co Ltd BREWERS' to the rim, no damage but some stains to the tray and inside vesta holder, Very Good. R\$200 (250 – 400)

225. DEWAR'S

2.5ins tall x 6ins dia, raised letters "DEWAR'S" to plinth and top section, Royal Doulton pm, Very Good. R\$150 (175 – 200)

226. WHITE HORSE

2ins tall x 4ins wide, horse shoe shaped matchbox holder, "THE WHITE HORSE CELLAR ESTAB 1742" on both sides of the holder. All over blue pattern with "GOOD LUCK" on the horse shoe. Shelley Late Foley pm. Very Good. R\$175 (200 – 250)

227. USHERS

2ins tall x 4.5ins long, to both sides "USHER'S SCOTCH WHISKY" Made in England pm, crazing & minor chip to base edge, Good. R\$25 (40 – 60)

228. IONA

2.25ins tall x 6ins long, "IONA" WHISKY" to both sides, 'G&J. MACLACHLAN Ltd DISTILLER GLASGOW' to the dish and on the back is "MACLACHLAN'S, Haycock & Corfield pm, crazing & light wear to change tray, Good. R\$100 (125 -175)

229. DAWSON'S

2ins tall x 5ins long, Deco shaped "DAWSON'S SCOTCH WHISKY" to both sides, Causton pm, crazing & minor paint spots missing, Good. R\$25 (40 – 60)



227 228 229



236(3) 237(2) 238(2)

230. CATTO'S

4.25ins diameter, "CATTO'S WHISKY ABERDEEN" with exhibition medals, Hunt & Frenkel Blackfriars pm, light wear, Very Good. R\$100 (125 – 175)

231. USHERS

2.5ins tall x 3.25ins diameter sepia print, "USHERS SPECIAL RESERVE WHISKY" and "USHERS OVG WHISKY" to rear. With pictures of WWI soldier and Kipling verse. Raphael Tuck pm, very Good. R\$150 (175 – 200)

232. WATSON'S

5ins diameter, to both sides "WATSON'S OLD SCOTCH WHISKY" to plinth "JAMES WATSON & Co Ltd DUNDEE" with "No 10" tm. No pm, heavy dirty crazing, Good. R\$100 (125 – 150)

233. DUNVILLE'S

5.5ins diameter, to plinth "DUNVILLE'S V R WHISKY" with red Crown between V & R. Richard Patterson Belfast pm, Very Good. R\$80 (120 – 180)

234. GRANT'S & GREER'S

5.5ins triangular, 'GRANT'S LIQUEUR WHISKY' to 3 sides, Clifton Cottle pm, Plus "GREER'S O.V.H. SCOTCH WHISKY" Shelly pm, Both Very Good. (2) R\$60 (75 – 100)

235. AINSLIE'S, B.L., STEWART'S

2ins tall x 4ins long, 'AINSLIE'S ROYAL EDINBURGH SCOTCH WHISKY' to both sides, Wade Regicor pm. Good. Plus 4.75ins diameter "B.L. BLENDED SCOTCH WHISKY" West Highland pm (hairline on rim). PLUS 4.75ins diameter "STEWART'S OF DUNDEE" Crown Devon pm Good. (3) R\$50 (75 – 100)

236. DEWAR'S

4.5ins diameter "DEWAR'S WHITE LABEL SCOTCH WHISKY" Wade Regicor pm, Good, Plus 4.5ins square "DEWAR'S WHISKY" with central "DEWAR'S" in red letters. John Maddock & Sons pm, rim chip, Plus 4.5ins square "DEWAR'S WHISKY" with central "IMPERIAL" in red letters. Maddock & Sons pm, Good. (3) R\$50 (75 – 100)

237. WATSON'S & GREER'S

4.5ins x 3.75ins oblong shaped change tray, "WATSON'S No 10 SCOTCH". Distillers marks to base, top left corner has been repaired (good) plus 4.25 dia, "GREER'S O.V.H SCOTCH WHISKY", Shelly pm, Very Good. R\$75 (80 – 100)



230 231 232



239 (3) 240(3) 241(3)

238. GAELIC & DEWAR'S

5.25ins dia "GAELIC OLD SMUGGLER WHISKY", Royal Doulton pm, age crazing, fleabite nick off edge, chip off base, Plus 5ins dia "DEWAR'S WHISKY", Minton pm, Good. (2) R\$60 (75 – 100)

239. DAWSON'S, GORDON'S, JOHN HAIG'S

5ins square "PETER DAWSON SPECIAL SCOTCH WHISKY" to two sides, "PD" tm to other sides, Made in England pm, wear, Plus 5.25ins dia, "GORDON'S LONDON GIN" Empire pm, fading, Plus 5ins square, "JOHN HAIG'S" to 2 sides, "SCOTCH WHISKY" & "GOLD LABEL" to other sides. Distillers pm to base, Good. (3) R\$60 (75 – 100)

240. HIGHLAND QUEEN, STEWART'S, TEACHER'S

5ins long "HIGHLAND QUEEN SCOTCH WHISKY", Minton pm, Very Good, PLUS 2.25ins tall x 4.5ins square "STEWART'S DUNDEE DE LUXE SCOTCH WHISKY" to 2 sides, "CREAM OF THE BARLEY" to other sides, Wade Regicor pm, Very Good, Plus 4.5ins dia, "TEACHERS WHISKY ESTAB. 1830" to sides, distillers marks to base, Very Good. (3) R\$90 (120 – 150)

241. D.C.L., DAWSON, JOHNNIE WALKER

4.25ins dia, "D.C.L. SCOTCH WHISKY" distillers marks to base, Good, Plus 5.75ins dia "PETER DAWSON SCOTCH WHISKY" central picture Willow Pattern, Minton pm, light wear, Good, Plus 5ins square "JOHNNIE WALKER SCOTCH WHISKY" to sides, Wade Regicor pm, Very Good. R\$80 (120 – 150)

242. JOHNNIE WALKER

18.5ins tall x 15ins wide, celluloid advertising sign mounted on board, "JOHNNIE WALKER SCOTLAND'S MOST FAMOUS WHISKY" picture of JW playing Golf, minor wrinkles to surface, Very Good. R\$500 (600 – 800)

243. DUNVILLE'S

11.5ins dia, old metal serving tray, baked white enamel print "DUNVILLE'S V.R. WHISKY" Richard Patterson Belfast pm, minor ding above letter E touched up, Very Good. R\$40 (60 – 90)



244 245 246



247 248 249



250 251 252



253 254 255



256



257

Reference Books

244. WESCOTT VOL 1

The bible for whisky jugs, hardback, published in 1991, second hand copy, in Very Good condition, Very hard to find. R\$50 (75 – 125)

245. WESCOTT VOL 2

The revised edition with all new items and price updates for Vol 1, hardback, in near new condition. R\$50 (75 – 125)

246. KINGSWARE

Hardback, by Jocelyn Lukins, published 1992, the bible for all Kingsware Flasks and associated wares, second hand, Very Good. R\$50 (75 – 125)

247. DOULTON

Hardback, published by Jocelyn Lukins, covers every type of Doulton ever made, second hand, Very Good. R\$50 (75 – 125)

248. PUB JUGS

Hardback, published by The 'OLE BOTTLEMAN, A British publication on Pub Jugs, second hand, Very Good. R\$30 (50 – 75)

249. DOULTON LAMBETH

Hardback, published by Jocelyn Lukins, 1990, with all advertising items made by Doulton, second hand, Very Good. R\$50 (75 – 125)

250. CARTERS 1995

Hardback, published by Carters & written by David Westcott, covers all Australiana & Collectables, Whisky Jugs, Kingsware etc, with price guide, second hand, Very Good. R\$30 (50 – 75)

251. AUSTRALIANA 1986

Hardback, published by David Westcott 1986, similar to lot 250, second hand, Very Good. R\$30 (50 – 75)

252. KINGSWARE FLASKS

Soft back, published by Jocelyn Lukins, black & white, covers all Kingsware Flasks, second hand, Very Good. R\$10 (20 – 30)

253. LYLE PRICE GUIDE

Hardback, published by Tony Curtis 1993, all colour images, covers all manner of advertising antiques, whisky included, second hand, Very Good. R\$30 (40 – 60)

254. WHISKY CERAMICS

Soft back, published by Eric Eulenstein, covers all types of whisky ceramics, second hand, Very Good. R\$40 (60 – 90)

255. WHISKY JUGS

Soft back, published by Les Martin, 1977, black & white, covers stoneware Whisky Bottles, second hand, well worn R\$20 (40 – 60)

256. WESTCOTT AUSTRALIANA

Collection of Auction catalogues by Westcott, Vol 1 1-4 1989, Vol 2 5-8 1990, Nos 11- 51 inclusive (missing no's 22, 36, 45, 50), plus issue 65 & special editions Lamberton Whisky collections & Lachie Pittman Whisky Collection, covering some 16 years of auctions, a wealth of information, (47 catalogues, very heavy!!) R\$50 (100 – 200)

257. PETER DAWSON

Set of 4 framed prints 17 x 13 inches, glazed with non reflective glass, pictures of various breeds of dogs playing Poker, titled "A FRIEND IN NEED", "A BOLD BLUFF", "HIS STATION & FOUR ACES" & "WATERLOO", each have "WITH THE COMPLIMENTS OF MACKENZIE TOOTELL PTY LTD MELBOURNE AGENTS FOR PETER DAWSON SCOTCH WHISKY", all scenes have bottles of PD scotch, very Colourful, Very Good. R\$250 (400 – 600)

258. MACKIES

6ins tall, teal green glass jug, white enamel print "MACKIE'S WHITE HORSE CELLAR", with picture of the White Horse, applied handle, a very rare item, Very Good. R\$900 (1200 – 1800)



258

