

KIWI AUCTIONS

*Presents a Postal Auction
of Whisky & Brewery
Advertising Wares*



October 29th 2006

TERMS & CONDITIONS OF SALE

1. This is a minimum bid Absentee Auction, all bids will be handled as if you were present at the Auction, you can submit your bids by telephone, fax, email or by post using the bidding form enclosed.

2. Guarantee, We guarantee the descriptions of all items in this catalogue. Any item found to have damage or faults not described may be returned for a full refund within 45 days of the close of the sale. However any manufacturing flaw that does not significantly detract monetarily from the value of the item being sold will not be considered for a refund.

3. Bidding, You may submit your bids using any of the above methods any time after receipt of this catalogue. You may also contact us any time during the auction to check on your bid or find out what the current high bid is on any item. At this time you may raise your bid if you wish. The following scenario is how our absentee system works:

Suppose you wish to bid on lot 123 and advise us your bid of \$300 on this lot. At the same time another collector who also desires lot 123 bids \$200, then we will post the high bid at \$220. This will be your bid, i.e. 10% higher than the other bid of \$200. If no other bids are received on lot 123 then you will be the successful bidder at \$220 not the \$300 you were prepared to pay.

The highest bidder shall be determined by Kiwi Auctions, in the case of any disputes Kiwi Auctions shall have the final discretion in determining the successful purchaser.

At no time will Kiwi Auctions or it's agents divulge the amount of the maximum bid we have received that may be higher than the current posted high bid.

The following are how each bid will be raised :

Simply a 10% increment on the bid received below your bid, or in the case of you being the only bidder on a lot then your bid will be successful at the reserve price.

4. Call Back Service, You can request this service by filling in the appropriate box on the bidding form or by verbal agreement by telephone. However this service is only available on lots with a reserve value of NZ\$500 or more. The same bidding conditions as described in clause 3 above will apply. All "Call Back" telephone calls are paid for by Kiwi Auctions Ltd.. Given the diverse time zones of our customers it may take several days for all "Call Back" bids to be completed. Please note that you will never be told what your competitors high bid is during the bidding. Where possible please provide us with home, work or mobile numbers and the best time to contact you.

ALL BIDDING IS IN NEW ZEALAND CURRENCY

5. Closing the Auction: all bids must be in our hands by Telephone, post, fax or email by closing time of 10.00pm October 29th 2006 (New Zealand Time). We anticipate many calls on the last day so please place your bids early. In the case of a tied bid the successful purchaser will be the bidder whose bid was received first.

6. Reserves: these are the amount on the left hand side of each lot, no bids will be accepted below these levels.

7. Terms: After the sale we **PACK** all successful purchases and **THEN WE WILL NOTIFY YOU** of the total cost including **POSTAGE & PACKAGING**. Because this sale is totally absentee we ask for your patience for approx. 14 days. Once notified you will have only one account to pay.

8. Buyers Premium: There is a 10% buyers premium which is added to the purchase price. GST will be added to the premium only for NZ residents

9. Prices realised: Catalogue subscribers will automatically receive results by post after the sale.

10. Payment: once notified of your successful purchases payment in **NEW ZEALAND DOLLARS** or in your currency (after obtaining an amount from Kiwi Auctions) must be received within 21 days. Late payment will incur additional charges. Payment by Visa or Mastercard will incur a 2% surcharge to cover bank costs.

11. Foreign Exchange: We can now accept your personal cheque in your currency for payment, please enquire after the auction has ended for the amount due in your currency. Please note that the rates below are subject to constant change.

Indicative rates of exchange at time of printing were: (actual rate will be calculated on the day of payment)

Australia	\$1.00 buys	NZ\$1.13
England £1.00		NZ\$2.85
USA	\$1.00	NZ\$1.50

KIWI AUCTIONS

presents

**An Absentee Auction of Whisky &
Brewery Memorabilia**

October 29th 2006



KIWI AUCTIONS LTD

13 Summermist Drive Howick Auckland 2013 New Zealand

Telephone: +64 29 206 2000 Fax: +64 9 533 3584

Email: kiwi.auctions@xtra.co.nz

Website: www.kiwiauctions.co.nz



1

2

3



7

8

9



4

5

6



10

11

12

STONEWARE WHISKY BOTTLES

1. SHAMROCK

9ins tall, with handle, GREEN print "SHAMROCK", with picture of a flag & Harp & letters "T.W.B & Co St J" and to rear "P.O.BRIEN & Co CORK", H.Kennedy pm, Mint. (This was lot 6 Feb 2002). A very rare item.
R\$2500 (2750 - 3500)

2. SPECIAL HIGHLAND

7.25ins tall, with handle, "SPECIAL HIGHLAND WHISKY", with central picture of a Viking Sailboat with trademark "Griffin" in the sail, Port Dundas pm, professional lip repair, an unrecorded shape, Rare.
R\$450 (600 - 900)

3. CATTOS OLD

8.5ins tall, with handle, "CATTO'S OLD HIGHLAND WHISKY PARIS EXHIBITION 1878", with central picture of the Highlander, Port Dundas pm, there is a stress/shrinkage crack on the base edge, otherwise very good. A very rare Catto's variation we have not offered before.
R\$1500 (1750 - 2500)

4. ROB ROY

7.5ins tall, with handle, "ROB ROY OLD HIGHLAND WHISKY", pictures to both sides of a Highlander in full dress. Port Dundas pm. Very Good.
R\$225 (250 - 350)

5. DAWSON'S

8ins tall, with handle, "P.DAWSON EXTRA SPECIAL OLD SCOTCH WHISKY", in SEPIA print, Port Dundas pm, an unrecorded example, professional lip repair, Very Good.
R\$500 (600 - 900)

6. MY QUEEN

8ins tall, with handle, "MY QUEEN THE CREAM OF HIGHLAND WHISKIES", with picture on Queen Victoria, Port Dundas pm, poor repairs to top, otherwise Good.
R\$125 (150 - 200)

7. CATTOS

8ins tall, "CATTO'S HIGHLAND WHISKY with pictures showing medals awarded at the Paris 1878 & London 1884 Exhibitions, with central picture of a Highlander. Buchan pm. Very Good.
R\$200 (250 - 350)

8. DAWSON'S

9ins tall, no handle, "DAWSON'S PERFECTION OLD SCOTCH WHISKY" in SEPIA print to both sides, Port Dundas pm, Very Good, A rare variation.
R\$250 (300 - 400)

9. JEROBOAM

8ins tall, with handle, "JEROBOAM THE ROYAL BLEND WHISKY" with Stag tm. H.Kennedy pm, Very Good.
R\$90 (125 - 175)

10. JOHN DEWAR

5.75ins tall, with handle "JOHN DEWAR & SONS DISTILLERS, BY ROYAL WARRANT TO HER MAJESTY THE QUEEN", Doulton Lambeth pm, minor flea bite off rim, Good
R\$250 (300 - 400)

11. DEWAR'S

10ins tall, with handle, dark green top, "DEWAR'S PERTH WHISKY THE WHISKY OF HIS FOREFATHERS BY ROYAL WARRANT TO HER MAJESTY THE QUEEN", elaborate picture, Doulton Lambeth pm, Very Good.
R\$400 (450 - 550)

12. KING GEORGE IV

7.75ins tall, with handle, "KING GEORGE IV LIQUEUR WHISKY", Royal Doulton pm, Very Good.
R\$175 (200 - 300)

13. BALDERSONS

6ins tall, with handle, "BALDERSONS OLD HIGHLAND WHISKY", with Stag tm. Port Dundas pm. Mint
R\$575 (600 - 700)

14. GLENERNAN

8ins tall, with handle, "GLENERNAN SCOTCH WHISKY IMPORTED BY MICHIE & Co Ltd TORONTO", with central picture of a Stag, H. Kennedy pm, professional lip repair. Another unrecorded example, Very Rare.
R\$900 (1200 - 1500)

15. GLENCO

7.5ins tall, with handle, "GLENCO BRAND SCOTCH WHISKY", with elaborate thistle decoration, no pm, fine crazing, Very Good.
R\$175 (200 - 300)



13

14

15



16

17

18



19

20

21



22

23

24



25

26

27



side view lot 24

16. CRAIGARD

7.5ins tall, with handle, "CRAIGARD ROYAL BLEND WHISKY MACTAVISH & CO GLASGOW" in a belt style decoration, Taylor Liverpool pm, Very Good.
R\$175 (200 - 300)

17. GLENLAKE

7ins tall, no handle, mallet shape, "GLEN LAKE EXPORT SCOTCH WHISKY", with central picture of a Highlander, no pm, manufacturing blow hole to front under letter "P" of Export, Very Good.
R\$450 (600 - 800)

18. MY QUEEN

7.75ins tall, with handle, "MY QUEEN THE CREAM OF HIGHLAND WHISKIES", with picture on Queen Victoria, Port Dundas pm, Very crisp print, minor fleabite nick to back of rim, Very Good
R\$200 (300 - 400)

19. SANDERSON'S

8.5ins tall, with handle, "SANDERSON'S LIQUEUR SPECIAL SCOTCH WHISKY", no pm, Very Good.
R\$150 (200 - 300)

20. BULLOCHLADE

8.5ins tall, no handle, cobalt blue top, red & blue print "BULLOCH LADE'S BL SCOTCH WHISKY", Royal Doulton pm, Very Good
R\$200 (300 - 350)

21. JOHN DEWAR

6ins tall, with handle, JOHN DEWAR & SONS DISTILLERS PERTH", Doulton Silicon Glaze with Egyptian decoration, Royal Doulton pm, Very Good.
R\$200 (275 - 350)

22. RHODERICK DHU

4ins tall, with handle, sample size, "RHODERICK DHU OLD HIGHLAND WHISKY", with floral decoration, Very Good.
R\$250 (300 - 400)

23. THORNE'S

8ins tall to top of lid, all over blue glaze with Art Nouveau Flowers, embossed words "THORNE'S WHISKY" to lid and body, lid has a Thistle handle, Very Good.
R\$525 (600 - 700)

24. DEWAR'S SAMPLE HOTTY

4.75 x 3ins, with original Doulton Lambeth internal thread stopper, to sides "DEWAR'S PERTH WHISKY" and to rear/base "JOHN DEWAR & SONS LTD SPECIAL HIGHLAND WHISKY", with very elaborate Coat of Arms, Doulton Lambeth pm, a very rare item, Very Good.
R\$750 (800 - 1200)

STONEWARE WATER JUGS

25. THORNE'S

7.75ins tall "THORNES SCOTCH WHISKY" with applied lion tm and Harvester Scenes to body. Handle to rear, Doulton Lambeth pm, Very Good.
R\$900 (1000 - 1200)

26. CHALLENGE

6.25ins tall, with handle, blueish print "ASK FOR THE CHALLENGE WHISKY ANDERSON & SHAW GLASGOW", with very decorative scene of a Stag & Lake scene, Port Dundas pm, Very Rare, Very Good.
R\$1500 (1750 - 2200)

27. SANDERSON'S

6.5ins tall, with handle, "ASK FOR SANDERSON'S SCOTCH", Gray Portobello pm, Very Good.
R\$350 (400 - 600)



28

29

30



34

35

36



40

41

42



31

32

33



37

38

39



43

44

45

28. D.C.L

6.25ins tall, with handle, applied words "D.C.L. SCOTCH WHISKY", with applied harvest ware decoration all around, Royal Doulton pm, 2 hairlines from rim, one to side other to rear, Good.
R\$400 (500 - 600)

29. EXCALIBUR

6.5ins tall, with handle, applied words to shoulder "FORBES CUNNINGHAM & BOND" and in black print "EXCALIBUR SCOTCH & IRISH WHISKY", with picture of King Arthur's Sword to centre, this was lot 111 Feb 2002, A very rare jug, Mint.
R\$3250 (3500 - 4500)

30. WHYTE & MACKAY

6.5ins tall, with handle, Sepia print, "WHYTE & MACKAY'S SPECIAL WHISKY GLASGOW", to both sides, Port Dundas pm, Very Good.
R\$350 (400 - 600)

31. HAIG & HAIG

5.5ins tall, with handle, words to one side only "HAIG & HAIG DISTILLERS SINCE 1679 WHISKY", cobalt blue top & bottom, Royal Doulton pm, minor nick off spout professionally repaired, Very Good.
R\$450 (600 - 700)

32. VAT 69

5.75ins tall, all over cobalt blue stoneware, etched words "VAT 69 SANDERSON & SON DISTILLERS LIETH", Royal Doulton pm, a very rare jug, Very Good.
R\$850 (900 - 1200)

33. O.V.H.

4.25ins tall, raised letters to Pink top "O.V.H.", and in black print to sides "OLD SCOTCH WHISKY Wm GREER & Co GLASGOW", no pm, crazing, Very Good.
R\$500 (600 - 700)

34. GAELIC SMUGGLER

6.5ins tall "ASK FOR GAELIC OLDEST WHISKY BEST, to one side and to the other "OLD SMUGGLER WHISKY REGD" Detailed relief work all over with cameo of the young Queen Victoria to both sides. Port Dundas pm, Very Good.
R\$20 (300- 400)

35. HAIG & HAIG

5.75ins tall, with handle, "HAIG & HAIG DISTILLERS SINCE 1679 WHISKY", J. Stiff London pm, handle is new and not that well done.
R\$100 (125 - 150)

36. GILLION'S

4.25ins tall, two tone black print, "GILLON'S OLD SCOTCH Established 1817" applied harvest ware decoration, applied filigree handle. Doulton Lambeth pm, Very Good.
R\$300 (350 - 450)

37. DANDIE DINMONT

7.25ins tall, with handle, "DANDIE DINMONT SPECIAL SCOTCH", with central picture of a Dandie Dinmont dog, Buchan Portobello pm, professional rim repairs, Very Good. A desirable jug.
R\$900 (1200 - 1500)

38. STEWART'S

6.75ins tall, "THE PRE-EMINENT WHISKY J. & G. STEWART LTD EDINBURGH" to front of jug, on both sides picture of whisky bottle with wording on side "ASK FOR J & G EVERYWHERE", Buchan Portobello pm, professional repairs to rim, A very rare item, Very Good.
R\$900 (1200 - 1500)

39. BAILIE NICOL JARVIS

6ins tall, with handle, "BAILIE NICOL JARVIE", green bands top & bottom, Royal Doulton pm, professional repair to hairline in base on handle, Very Good.
\$900 (1100 - 1300)

40. DEWAR'S

6.75ins tall, with handle, applied decoration and words "DEWAR'S WHISKY", Royal Doulton pm, Very Good.
R\$275 (300 - 400)

41. JOHN DEWAR

6.5ins tall, with handle, applied words to shoulder "DEWAR'S PERTH WHISKY" and transferred words to front "JOHN DEWAR & SONS PERTH", Doulton Lambeth pm, Very Good.
R\$300 (400 - 500)

42. DEWAR'S

5.5ins tall, black print "DEWAR'S WHISKY" handle to rear Royal Doulton pm to base, Minute nick to end of spout
R\$200 (300 - 400)

43. DEWAR'S

5.25ins tall, with handle, applied Harvest ware decoration in white relief "DEWAR'S WHISKY", Royal Doulton pm to base, Very Good.
R\$200 (250 - 300)

44. DEWAR'S

4.5ins tall, black print "DEWAR'S WHISKY" handle to rear Royal Doulton pm to base, Mint.
R\$275 (300 - 400)

45 JOHN DEWAR

4.25tall, with handle, applied words to shoulder "DEWAR'S PERTH WHISKY" and transferred words to front "JOHN



46

47

48



52

53

54



48A

48B

DEWAR & SONS PERTH", Doulton Lambeth pm, rare small variation, Very Good.
R\$400 (450 - 500)

46. DEWAR'S

4.25ins tall, with handle, applied Harvest ware decoration in white relief "DEWAR'S WHISKY", Royal Doulton pm to base, Very Good.
R\$275 (300 - 400)

47. WALKER'S

3.75ins tall, Blue top, with handle "ASK FOR WALKER'S 167 SCOTCH WHISKY", Price Bristol pm, professional rim repair, Very Good.
R\$150 (200 - 300)

48. CHESTER'S BREWERY

4ins tall, with handle, "CHESTER'S BREWERY Co Ltd MANCHESTER", Lovatt Langley pm. Handle has been repaired (poorly), Good.
R\$50 (75 - 100)

48A. OLD READING ABBEY

7.75ins tall, 2 tone flared top & bottom, elaborate picture of 3 Monks seated around a table, "OLD READING ABBEY SCOTCH & IRISH WHISKY BUTLER & SONS READING", Price Bristol pm, 2 minor inner rim edge chips professionally restored, Very Good, A very rare early large jug.
R\$1750 (2250 - 3000)

49B. MORGAN LLOYD

6.5ins tall, 2 tone flared top & bottom, to one side "THE SPECIAL OLD IRISH WHISKY SOLD ONLY BY MORGAN



LLOYD & SON WINE & SPIRIT MERCHANTS CASTLE SQ CARNARVON", with picture of a man holding a bottle & glass with rural scene behind, to other side "GLENLIVET WHISKY SOLD ONLY BY MORGAN LLOYD" with picture of a Scotsman with his dog holding a glass. Price Bristol pm, very minor chip to inside of rim professionally restored, never seen this jug before, highly pictorial, Very Good.
R\$2750 (3000 - 3500)

DECANTERS

49. USHER'S CORONTION

10ins tall to top of Crown styled stopper, words on blue background, "Andrew Usher Distillers Edinburgh and Coronation of King George Vth & Queen Mary June 22nd 1911". Applied decoration with cameo pictures of the King & Queen. Copeland Spode pm, Very Good.
R\$300 (350 - 400)

50. WATSON'S

11.5ins tall to top of original stopper, words around shoulder "WATSONS WHISKY 1815 - 1915" pictures of R T Hon H N Asquith and HM King George V. Made in England and distillers marks to base, minor chip off base edge, Very Good.
R\$650 (700 - 800)

51. JOHNNIE WALKER

11ins tall, modelled glass decanter of Johnnie Walker, plastic hat, with paper label to front, Very Good.
R\$75 (80 - 100)



49

50

51



55

56

57

other side lot 48B

KINGSWARE

52. WATCHMAN MINI

3.75ins tall, with handle, rare miniature of the Watchman, Royal Doulton pm, professional repair to minor nick off rim, Very Good.
R\$900 (1100 - 1300)

53. ADMIRAL BEATTY

7.5ins tall, with handle, picture of "ADMIRAL BEATTY", with "DEWAR'S" in yellow raised letters to rear, Royal Doulton pm, professional repair lip, Very Good.
R\$250 (300 - 500)

54. STIGGINS

8ins tall, picture of and titled "STIGGINS", shows an interior view of a room with decanters etc. Royal Doulton pm, professional repair to lip chip, age crazing, Very Good.
R\$1000 (1200 - 1300)

55. PICKWICK

8ins tall, picture of "MR PICKWICK" to one side and "SAMMY VEL" to other. Royal Doulton pm with Noke signature, Age crazing, Minor chip to lip professionally restored, Very Good
R\$575 (600 - 700)

56. CONNOISSEUR

8.5ins tall, with handle, picture tilted "THE CONNOISSEUR", Royal Doulton pm, Very Good
R\$1600 (1800 - 2200)

57. MONK IN CELLAR

8.25ins tall, detailed picture of Monk in Cellar sampling the wine. Has signature for Noke. Royal Doulton marks to base. Issued in 1904. Fine crazing, Very Good.
R\$1100 (1200 - 1400)



58

59

60



64

65

66



70

71

72

58. HOOKED

6ins tall, picture of a fisherman sitting on a wall having just hooked a fish, has the entwined letters AC to rear, and on base "Greenlees Brothers Claymore Scotch Whisky Distillers Registered No 641908, Circa 1914. Professional lip repair, fine crazing otherwise Very Good. \$2000 (2250 - 2750)

59. JOLLY GOOD FELLOW

8ins tall, picture of many happy gents and titled "HE'S A JOLLY GOOD FELLOW", Royal Doulton pm, Very Good. R\$700 (800 - 1000)

60. SYDNEY HARBOUR

5.5ins tall, with handle, picture of "SYDNEY HARBOUR" with large black print "DEWARS" to rear, Royal Doulton pm, fine crazing, minor nick to foot professionally restored, Very Good. R\$500 (600 - 700)

61. SPORTING SQUIRE

6.5ins tall, globular shaped with picture of the Sporting Squire, has large word "DEWARS" to rear in yellow, Royal Doulton pm, Very Good. R\$250 (300 - 400)



61

62

63



67

68

69



84A

62. PICKWICK FROM DICKENS

8.5ins tall, to top of original ceramic stopper, words to body, "MR PICKWICK FROM DICKENS". To the rear is an original label for Dickens Old Scotch Whisky. In the rare Queensware colouring, Royal Doulton pm. No crazing, Very Good. R\$650 (700 - 800)

63. BRITANNIA

7ins tall, green background detailed transfer print to front of Britannia, and in black print to rear "DEWAR". Royal Doulton pm, age crazing, Very Good. R\$475 (500 - 600)

64. UNCLE SAM

7.5ins tall, rare Queensware Version, picture to front of Uncle Sam smoking a pipe, Royal Doulton & Dewars White Label marks to base, fine crazing, Very Good. R\$900 (1000 - 1200)

65. GOLFING

8ins tall, with repro Dewars stopper, central picture of Golfers in action, and to rear a Golfer in full swing, signed Noke, Royal Doulton pm, Fine crazing, Very Good. R\$1200 (1300 - 1500)

66. WATCHMAN

8ins tall, modelled head, with a repro Dewars stopper, with transfer print of the Watchman with staff over shoulder & carrying a Lantern, Royal Doulton pm, minor surface scratch, fine crazing, Very Good. R\$400 (500 - 600)

67. TONY WELLAR

8ins tall, with original Dewars Stopper, detailed picture of the coachman Tony Wellar and titled, "TONY WELLAR BEVARE OF THE VIDDERS" and nothing to rear. Royal Doulton & Dewars marks to base. Fine crazing, Very Good R\$275 (300 - 350)

68. GEORGE THE GUARD

8ins tall, titled "GEORGE THE GUARD", with picture of George holding a Blunderbus, Royal Doulton & Dewars marks to base, Very Good. R\$350 (400 - 500)

69. OYEZ OYEZ

8ins tall, with repro Dewars Stopper, picture of the Town Crier to one side with words in raised lettering "OYEZ OYEZ". Royal Doulton & Dewars pm. Has the signature for Noke. Part of original silver foil labels to rear, Very Good. R\$450 (500 - 600)

70. OYEZ OYEZ

10ins tall, (stopper not original), picture of the Town Crier to one side with words in raised lettering "OYEZ OYEZ", & to rear in piping "DEWARS SCOTCH WHISKY". Royal Doulton pm, Very Good. R\$600 (700 - 800)



73

74

75



76

77

78



79

80

81



85

86

87



82

83

84

71. ARKWRIGHT

9ins tall, with handle, picture titled "RICHARD ARKWRIGHT 1732-1792", with elaborate picture in gold lettering of his invention the Spinning Frame, Royal Doulton pm, fine crazing, professional lip repair, Very Good.
R\$700 (800 - 1000)

72. McNAB

9.25ins tall, with handle, untitled "McNAB", with word "DEWAR'S" in relief to rear, Royal Doulton pm, professional lip repair, Very Good.
R\$225 (250 - 300)

CHINA WATER JUGS

73. AINSLIE'S

4.5ins tall, "AINSLIE'S WHISKY" with highly decorative pictures of Edinburgh Castle and National Gallery to sides. Copeland Pottery & Sir Joseph Causton and Sons London marks pm, Near Mint
R\$800 (900 - 1100)

74. AINSLIE'S

4.25ins tall, "AINSLIE'S WHISKY" with highly decorative pictures of Edinburgh Castle and National Gallery to sides. Copeland Pottery & Sir Joseph Causton and Sons London marks pm, Near Mint
R\$800 (900 - 1100)

75. AINSLIE'S SUBMARINE

4.75ins tall, BLUE print "AINSLIE'S SCOTCH AS SUPPLIED TO THE ROYAL NAVY" to one side and to other "AINSLIE'S HAS RISEN TO THE TOP" with a detailed picture of a Submarine with a large bottle of Ainslies whisky on the bow. Words to inside of rim "AINSLIE'S EDINBURGH". Royal Doulton pm, lip chip professionally repaired, Very Good
R\$3000 (3250 - 3500)

76. AINSLIE'S

4.75ins tall, lustre style glaze, white lustre on the inside, "AINSLIE'S WHISKY", to 2 sides, recessed handle, Causton pm, near mint, gold trim all intact.
R\$500 (600 - 700)

77. ARTHUR BOOTH

4.25ins tall, red & black print "VERY OLD AB PURE SCOTCH WHISKY", to sides, Keeling & Co Burslem pm, Very Good.
R\$275 (300 - 400)

78. BALIE NICOL JARVIE

5ins tall, with handle, red & black print "BAILIE NICOL JARVIE" to sides, no pm, Very Good
R\$500 (600 - 700)

79. BULLOCHLADE

4ins tall, with handle, "BULLOCHLADE GOLD LABEL PEDIGREE SCOTCH", with picture of the Highlander to front, James Green Nephew pm, near mint, gold trim intact.
R\$300 (400 - 600)

80. BULLOCHLADE

3.75ins tall, black print, yellow jug. "BULLOCHLADE "BL" THE PEDIGREE SCOTCH" to both sides and to front picture of a Highlander. James Green & Nephew pm, Very Good.
R\$350 (400 - 450)

81. JOHN BEGG

5ins tall, "TAKE A PEGG OF JOHN BEGG" with Coat of Arms to both sides. Shelley pm. Minor nick to spout professionally repaired, Very Good.
R\$400 (500 - 600)

82. BUCHANAN'S HUNTA

7.75ins tall, "BUCHANAN'S SPECIAL RED SEAL SCOTCH WHISKY" picture of hunt scene. Frank Beardmore and Co Fenton pm to base, some staining to bottom of jug, professional repair to minor chip on bottom edge of handle, Very

Good.
R\$2500

(2750 - 3000)

83. BUCHANAN'S HUNT B

7.75ins tall, "BUCHANAN'S SPECIAL RED SEAL SCOTCH WHISKY" picture of hunt scene. Frank Beardmore and Co Fenton pm to base, Very Good.
R\$3000 (3500 - 4000)

84. BUCHANAN'S HUNT C

7.5ins tall, "BUCHANAN'S SPECIAL RED SEAL SCOTCH WHISKY" picture of hunt scene. Frank Beardmore and Co Fenton pm to base, some wear to word Buchanan's, Very Good.
R\$3000 (3500 - 5000)

84A. BUCHANAN'S LEGAL ADVICE

7.75ins tall, "BUCHANAN'S SPECIAL RED SEAL", with colourful picture of a couple seeking advice from a Lawyer, titled "LEGAL ADVICE", also signed "VICTOR VENNER", Frank Beardmore & Co Fenton pm, fine crazing very good, one of rare ones.
R\$3750 (4250 - 5000)

85. BUCHANAN'S EAGLE A

7.75ins tall, "BUCHANAN'S SPECIAL RED SEAL SCOTCH WHISKY" picture of hunt scene. Frank Beardmore and Co Fenton pm to base, professional repair to spout, crazing, Very Good.
R\$2500 (2750 - 3000)

86. BUCHANAN'S EAGLE B

7.75ins tall, "BUCHANAN'S SPECIAL RED SEAL SCOTCH WHISKY" picture of hunt scene. Frank Beardmore and Co Fenton pm to base, Very Good.
R\$3000 (3500 - 5000)

87. NZ EXHIBITION

5ins tall, "BLACK AND WHITE SCOTCH WHISKY" under spout. Elaborate picture of the Centennial Tower. "New Zealand Centennial Exhibition 1840 - 1940" to sides. Shelley pm. Minor nick to spout professionally repaired, Very Good, good crisp picture
R\$1200 (1400 - 1600)



88

89

90



94

95

96



100

101

102

88. JOHN BEGG

5.75ins tall, "TAKE A PEGG OF JOHN PEGG" to sides, no pm, minor wear to paint on one side, Good.
R\$150 (175 - 200)

89. BURKE'S

6.5ins tall, "BURKE'S DUBLIN WHISKY" in red print on both sides of jug, Fielding pm, old fine hairlines to rim and mid handle, wear to bulbous section, Good
R\$250 (300 - 400)

90. CRAWFORD'S

7ins tall, "ASK FOR CRAWFORD'S C.C.C. OLD SCOTCH WHISKY" to one side and to other multicolour pictures of King Edward VII & Queen Alexandra for their Coronation in 1902. Fielding pm, hairline running off rim, age crazing, Good. A very rare early unrecorded jug.
R\$1800 (2000 - 2250)

91. 2 DOGS BOTTLE

4.75ins tall "BLACK AND WHITE IT'S THE SCOTCH" seated dogs with bottle to both sides, Shelley pm, Very Good.
R\$200 (250 - 300)

92. 2 DOGS BOTTLE

4.25ins tall, "BLACK AND WHITE ITS THE SCOTCH" 2 dogs and a bottle to both sides, Shelley pm, this is the rare smaller size, near mint
R\$375 (400 - 600)

93. CHECKERBOARD

4.75ins tall, "BUCHANAN'S BLACK AND WHITE WHISKY" formed in a chequer board, Made in England pm, Near Mint,



91

92

93



97

98

99



103

104

105

Green and Nephew pm, Very Good.
R\$225 (300 - 350)

99. RUNNING DOGS

5ins tall, "BUCHANAN'S BLACK AND WHITE SCOTCH WHISKY" to sides "BUCHANAN'S BLACK AND WHITE SCOTCH WHISKY" beneath the pouring spout. Chequers to handle, running dogs to one side and seated dogs to the other. James Green and Nephew pm, minor ding to base edge, Very Good, this is the harder variation, also has the plastic dogs attached.
R\$500 (400 - 500)

100. BEGGING DOGS

4.75ins tall, "BUCHANAN'S BLACK AND WHITE ASK FOR IT" begging dogs (no red tongues) to one side, and dogs looking over stone wall to the other, Shelley pm, Very Good.
R\$350 (400 - 500)

101. DOGS FACING

4.25ins tall, "SCOTCH WHISKY BLACK AND WHITE", portrait of 2 dogs looking at each other on both sides within chequered border, Shelley pm, smaller version, Very Good.
R\$350 (400 - 500)

102. DOGS FACING

5.25ins tall, "SCOTCH WHISKY BLACK AND WHITE" double chequered border. Portrait of 2 dogs looking at each other on both sides within chequered border, Made in England, Light wear, Very Good.
R\$300 (400 - 600)

103. HOPSCOTCH

5ins tall, "BUCHANAN'S BLACK AND WHITE SCOTCH WHISKY" chequer board black and white. Made in England

has the little plastic dogs attached.
R\$400 (450 - 500)

94. SHIELD

4.5ins tall, "BUCHANAN'S BLACK AND WHITE WHISKY" with shield trademark. Made in England pm, Professional repair to minor chip on base of handle. Very Good.
R\$250 (300 - 400)

95. SHIELD

4.25ins tall, "BUCHANAN'S BLACK AND WHITE WHISKY" with shield trademark. Rare small version, Made in England, some fading to top rim area, Good.
R\$270 (300 - 400)

96. RUNNING DOGS

4ins tall, "BUCHANAN'S BLACK AND WHITE SCOTCH WHISKY" to sides, with "BUCHANAN'S BLACK & WHITE SCOTCH WHISKY" under spout, Chequers to handle, running dogs to one side and seated dogs to the other. James Green and Nephew pm, Very Good.
R\$250 (300 - 350)

97. BEGGING DOGS

4.75ins tall, "BUCHANAN'S BLACK AND WHITE ASK FOR IT" begging dogs (with red tongues) to one side, and dogs looking over stone wall to the other, Made in England pm, minor lip chip professionally restored, Very Good.
R\$300 (350 - 450)

98. RUNNING DOGS

4ins tall, "BUCHANAN'S BLACK AND WHITE SCOTCH WHISKY" to sides. Chequers to handle, running dogs to one side and seated dogs to the other. James



106

107

108



112

113

114

pm, Very Good.
R\$375

(400 - 600)

104. HOPSCOTCH

4.55ins tall, "BUCHANAN'S BLACK AND WHITE SCOTCH WHISKY" chequer board black and white. Made in England pm, Very Good.
R\$375

(400 - 600)

105. OLD CHARLIE

4ins tall, with handle, "OLD CHARLIE FINEST JAMICA RUM" to sides with picture of an English Gent holding a bottle of Woods Old Charlie Rum, Fieldings pm, professional repair to minor lip chip and base edge, Very Good, a neat little early jug.
R\$600

(700 - 900)

106. CLAYMORE

4.5ins tall, with handle, "CLAYMORE SCOTCH WHISKY" to sides with crossed Claymores tm, Royal Doulton pm, professional lip repair, Very Good.
R\$500

(600 - 700)

107. CLAYMORE

6.5ins tall, green print "GREENLEES BROS CLAYMORE SCOTCH WHISKY" with Crown & crossed swords tm to both sides. Royal Doulton pm, Very Good.
R\$1100

(1200 - 1300)

108. CLAYMORE

5ins tall, "CLAYMORE RARE OLD SCOTCH WHISKY", cobalt blue top, Royal Doulton pm, repairs to side of jug, some lettering retouched, Good.
R\$300

(400 - 500)

109. CRAWFORD'S

4.5ins tall, "A & A CRAWFORD'S SCOTCH WHISKY" with all-over willow pattern scene. Made in England pm. Fine crazing and light staining to lower half of jug, Good.
R\$300

(350 - 400)



109

110

111



115

116

117



118

119

120

110. CUTTY SARK

4.5ins tall, "CUTTY SARK SCOTCH WHISKY", with pictures to sides of the Cutty Sark and the mast head is in relief under spout, Burleigh Ware HCW pm, Very Good.
R\$200

(250 - 300)

111. DICKEN'S

4.5ins tall, "DICKENS SCOTCH WHISKY", with picture of a Lion holding a Cross, Unknown pm marks to base, chip off inside of rim by handle, Good.
R\$250

(300 - 400)

112. DCLLAWSON WOODS

4.25ins tall, "D.C.L GOLD LABEL SCOTCH WHISKY" colourful Lawson Wood prints to sides titled "SAY WHEN MAN!!" and to other "I SAID STOP - AND HE STOPPIT!". Royal Doulton pm, staining to lower half of jug, Good.
R\$200

(250 - 300)

113. DCL

6ins tall, "D.C.L GOLD MEDAL SCOTCH WHISKY" to sides, Royal Doulton pm, Very Good.
R\$400

(500 - 700)

114. DEWAR'S

4ins tall, "DEWAR'S IMPERIAL" in bold navy lettering to one side only, Royal Doulton pm, an early rare Dewars jug, hairlines around base of jug by handle, displays well
R\$125

(150 - 200)

115. PETER DAWSON

4.75ins tall, copper lustre finish, "PD FOR PERECT COMFORT SCOTCH" to sides and "PD SCOTCH" under spout, England pm, age crazing, spout repaired & hairline off rim, Good.
R\$275

(300 - 350)

116. DAWSON'S

5.25ins tall, "PETER DAWSON'S SPECIAL SCOTCH WHISKY" black and red lettering on both sides of yellow jug. Made in England pm, Very Good.
R\$225

(250 - 300)

117. PETER DAWSON

4.75ins tall, "PETER DAWSON SCOTCH WHISKY" "P D" linked trademark in blue circle to centre of jug, Grays pm, Very Good.
R\$200

(250 - 300)

118. PETER DAWSON

4ins tall, handled jug in Kingsware styled colouring, with raised letters "PETER DAWSON'S SCOTCH" on one side and yellow Harebells to other. Hancock Corfield marks to base, fine crazing, Very Good.
R\$250

(300 - 400)

119. DUNVILLE'S

5.5ins tall, "DUNVILLE'S V. R. WHISKY" with one crown between the V & R on one side, "DUNVILLE'S SPECIAL LIQUERUR WHISKY" with 3 crowns underneath DUNVILLE'S, JA Campbell, pm, fine crazing, Very Good.
R\$550

(600 - 700)

120. DANDIE DINMONT

5.5ins tall, "DANDIE DINMONT SCOTCH WHISKY", picture of the Dandie Dinmont dog, Wade Regicor pm, fine crazing, Very Good.
R\$175

(200 - 300)



121

122

123



127

128

129



133

134

135

121. ENCORE

6.25ins tall, "ASK FOR THE ENCORE WHISKY" to one side of jug, Fielding Stoke on Trent, fine dirty crazing, Very Good.

RS425 (450 - 550)

122. GRANT'S

3.5ins tall, all over Light Blue & White, "GRANT'S STANDFAST WHISKY", James Green Nephew pm, Very Good

RS300 (350 - 400)

123. JOHN HAIG

4ins tall, "BY SPECIAL APPOINTMENT JOHN HAIG'S GLENLEVEN" inside shield with Coats of Arms on one side, "By SPECIAL APPOINTMENT JOHN HAIG'S LIQUEUR" inside shield with Coats of Arms on other side. Pale Blue crocodile pattern. FIELDINGS STOKE ON TRENT pm, Very Good. A very rare early jug.

RS950 (1000 - 1200)

124. GLENMORANGIE

4.5ins tall, "GLENMORANGIE SINGLE HIGHLAND MALT WHISKY", & under spout 1843-1993 150th Sesquicentennial, Buchan pm. Mint

RS275 (300 - 400)

125. GREER'S

4.75ins tall, "GREERS OVH SCOTCH WHISKY", Shelley pm, Very Good.

RS300 (350 - 450)

126. GREER'S

4ins tall, "GREERS OVH SCOTCH WHISKY", Made in Scotland pm, gold trim to rim & handle, fine crazing, Very Good.

RS300 (350 - 450)

127. HARVEY'S

4.75ins tall, "HARVEY'S GOLD LABEL SCOTCH WHISKY" to sides, Made in England pm, Near Mint.

RS600 (700 - 800)

128. HIGHLAND LADDIE

4.75ins tall, "HIGHLAND LADDIE OLD SCOTCH WHISKY" with picture of Highlanders dancing a Jig to one side, and to other "SYKES CROWN VAT", Causton pm, minor chip off spout professionally restored, a very rare jug, Very Good.

RS1200 (1500 - 1700)

129. HANSON'S

5.5 ins tall, "HANSONS A.G.R." in shield on one side, "HANSONS BONNIE DUNDEE" in shield on other side. Shelley pm, a very attractive blue & white jug, Very Good

RS1200 (1300 - 1500)

130. HARVEY'S

3.5ins tall, unusual side pouring action, "HARVEY'S SPECIAL SCOTCH WHISKY" to sides with red stripe, Carltonware pm, repairs & hairlines to rim (poor).

RS70 (100 - 150)

131. JOHN JAMESON

6ins tall, triangular shaped jug, "JOHN JAMESON NOT A DROP SOLD TILL IT'S SEVEN YEARS OLD" to both sides of jug. James Green & Nephew pm, tight hairline to rim otherwise Very Good.

RS225 (250 - 300)

132. KINGS RANSOM

6.75ins tall, two tone, with blue top "KINGS RANSOM AROUND THE



124

125

126



130

131

132



136

137

138

WORLD" with Coat of Arms and "WHITELEYS OF LEITH". No pm, Very Good.

RS400 (500 - 600)

133. KING GEORGE IV

5.5ins tall, "TO THE MEMORY OF HIS LATE MAJESTY KING GEORGE THE 1V" to one side, head and shoulders of King George on other side in black, centre in red lettering and Coat of Arms "With the compliments of the Proprietors of King George IV Old Scotch Whisky". Elaborate handle & Floral decoration, Royal Doulton pm, Very Good.

RS400 (450 - 600)

134. KING GEORGE IV

4.25ins tall, "KING GEORGE IV OLD SCOTCH WHISKY", colourful Lawson Wood prints to sides titled "SAY WHEN MAN!!" and to other "I SAID STOP - AND HE STOPPIT!". Royal Doulton pm, wear to transfers, Good

RS400 (450 - 600)

135. KING GEORGE IV

5.75ins tall, "KING GEORGE IV OLD SCOTCH WHISKY", Moulin De Loups pm, hairline to rim, fine crazing, Good.

RS125 (150 - 200)

136. KING GEORGE IV

7.75ins tall, "TOP NOTCH KING GEORGE IV WHISKY" to two sides of jug, Made in England pm, hairline to bridge of ice catcher professionally repaired, Very Good

RS325 (400 - 450)



139

140

141



145

146

147



151

152

153

154

137. KING GEORGE IV

6.5ins tall, "KING GEORGE IV TOP NOTCH SCOTCH WHISKY" with orange Crown tm, Royal Doulton pm, one side the Crown has faded a little, Very Good. R\$700 (800 - 900)

138. KINGS LIQUEUR

4ins tall, all over blue & white Spode Blue Italian pattern, "KINGS LIQUEUR FINEST SCOTCH WHISKY", Copeland pm, minor chip off inside of spout professionally restored, Very Good. R\$750 (800 - 1000)

139. McNISH

4ins tall, "McNISH'S DOCTORS' SPECIAL LIQUEUR CREAM OLD SCOTCH WHISKY" to both sides of jug. Centre of jug Coat of Arms with "ROBT McNISH & Co Ltd Glasgow & London" James Green & Son London pm, age crazing, light wear to gold trim, professional repair to pouring spout chip, Good R\$275 (300 - 400)

140. McNISH

8ins tall, early Victorian shaped jug, "DRINK McNISH'S DOCTORS' SPECIAL SCOTCH WHISKY THE MEDICAL WHISKY OF THE WORLD" to sides in brown print, Dunn Bennett pm, hairline to rim near spout, Very Good, a classic rare jug. R\$1750 (2000 - 3000)

141. McNISH

3.75ins tall, tartan body with green background, "McNISH" all over body, and to front "McNISH'S DOCTORS' SPECIAL WHISKY". Dudson Bros Handley England pm, Very Good. R\$300 (350 - 400)

142. McNISH

3.25ins tall, tartan panels, white print, "McNISH" to both sides, and to front panels "McNISH'S SPECIAL SCOTCH WHISKY". Dunn Bennett pm, Very Good. R\$150 (200 - 250)

143. MITCHELL'S

6ins tall, modelled character jug, "MITCHELL'S OLD IRISH WHISKY" to rim. No pm. Very Good, a rare Irish version of this style. No pm, minor paint specks missing to inside of rim, Very Good R\$300 (350 - 400)

144. MACLEAY DUFF

4.75ins tall, modelled head, "MACLEAY DUFF WHISKY", Royal Torquay pm, fine crazing, Very Good. R\$250 (300 - 400)

145. LOWRIE'S

5ins tall, "LOWRIE" under spouts and to both sides large colourful picture of a bottle of Lowries Whisky. Shelley pm, a crack to one side has been repaired (poor), Good R\$200 (300 - 400)

146. MEYNELL HUNT

4.25ins tall, "MEYNELL HUNT SCOTCH WHISKY" with huntsman on horse to sides, British Anchor pm, minor inside rim chip, crazing, a rare early jug, Good. R\$600 (700 - 800)

147. MILNE'S

4.5ins tall, "MILNE'S WHISKY" on one side, "MILNE'S DRY GIN" on other, with dark green band to top and green handle. Hoffman Australia pm, minor rim chip, Very Good. R\$100 (125 - 150)



142

143

144



148

149

150

148. MITCHELLS & BUTLER

4.5ins tall, "MITCHELLS & BUTLERS BALLY BOY OLD IRISH WHISKY", no pm, professional repair to rim chip, an rare early jug, Very Good. R\$600 (700 - 800)

149. MITCHELLS & BUTLER

4.5ins tall, "MITCHELLS & BUTLERS BALLY BOY OLD IRISH WHISKY", no pm, an rare early jug, fine crazing, Very Good. R\$600 (700 - 800)

150. MITCHELLS & BUTLER

4.5ins tall, "MITCHELLS & BUTLERS CRAGGANMORE OLD SCOTCH GLENLIVET", no pm, an rare early jug, fine crazing, Very Good. R\$600 (700 - 800)

151. McCALLUM'S BLUE

6ins tall, Powder Blue "MCCALLUMS WHISKY IS PERFECTION" with central picture of Chieftain to sides. Royal Doulton pm, Very Good. R\$375 (400 - 500)

152. McCALLUM'S GREEN

6ins tall, Green "MCCALLUMS WHISKY IS PERFECTION" with central picture of Chieftain to sides. Royal Doulton pm, Very Good. R\$375 (400 - 500)

153. McCALLUM'S PINK

6ins tall, Pink "MCCALLUMS WHISKY IS PERFECTION" with central picture of Chieftain to sides. Royal Doulton pm, Very Good. R\$375 (400 - 500)

154. McCALLUM'S CREAM

6ins tall, Cream "MCCALLUMS WHISKY IS PERFECTION" with central picture of Chieftain to sides. Royal Doulton pm, Very Good. R\$375 (400 - 500)



155

156

157



158

159

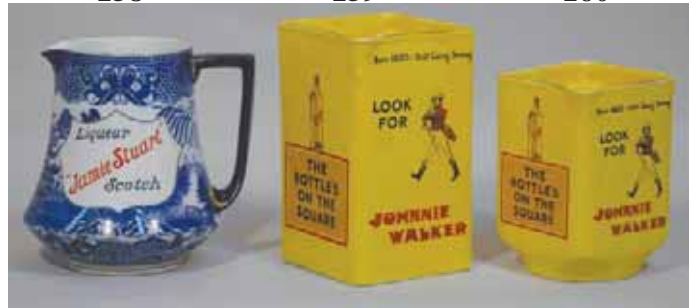
160



162

163

164



165

166

167



168

169

170



171

172

173

155. McCALLUM'S

6.5ins tall, character water jug, titled "THE McCALLUM" to sides, made for D&J McCALLUM Distillers Edinburgh. A limited edition jug of just 1000 - 1500, Circa 1930. Royal Doulton pm, Fine crazing, Very Good.
R\$1400 (1500 - 1750)

156. McLAUGHLAN'S

5ins tall, "IONA SCOTCH WHISKY MACLACHLANS LTD DISTILLERS GLASGOW" to one side and "MACLACHLANS IONA THE SPIRIT OF THE FUTURE" to the other with a picture of a seated gent taking a dram. Hancock Corfeild pm, a rare early jug, professional repair to minor lip chip, Very Good.
R\$1250 (1500 - 1750)

157. OLDSMUGGLER

6.25ins tall, gold band to top, "OLD SMUGGLER BLENDED SCOTCH WHISKY", Wade Regicor pm, the rarest of these types, Very Good.
R\$175 (200 - 250)

158. OLDSMUGGLER

6.5ins tall, modelled Sea Captain character, with heavy gold gilt trim to rim, "OLD SMUGGLER SCOTCH WHISKY", to one side, Royal Norfolk pm, age crazing, Very Good.
R\$75 (100 - 150)

159. OLDSMUGGLER

6.5ins tall, modelled Sea Captain character, "OLD SMUGGLER SCOTCH WHISKY", to one side, Royal Norfolk pm, age crazing, Very Good.
R\$100 (125 - 150)

160. STRONACHIE

7.5ins tall, "STRONACHIE DISTILLERY PERTHSHIRE SCOTLAND" to one side with very detailed picture of the distillery, and to other "SANDY MACDONALD SCOTCH WHISKY", Royal Doulton pm, large hairline to side with words, rim has repairs, displays well.
R\$700 (800 - 1000)

161. NO LOT

162. THORNE'S

6.25ins tall, "THORNE'S WHISKY" to sides. All over blue decoration to body, Shelley pm, lip repair and handle has been repainted, Good.
R\$450 (500 - 700)

163. THROGMORTON

4.5ins tall, unusual 3 way pouring action, "ASK FOR THROGMORTON GOLD CREST SCOTCH WHISKY" to both sides with Coat of Arms and to front a picture of a Butler holding 2 bottles of scotch, no potters marks, light wear to gilded Coats of Arms, Very Good.
R\$400 (500 - 600)

164. TAMPLIN

5ins tall, "TAMPLIN'S TABLE WATERS", Clifton Cottle pm, light wear to paint, 2 hairlines from the rim, Good.
R\$125 (150 - 200)

165. JAMIE STUART

5.75ins tall, all over Blue & White Willow pattern, "JAMIE STUART LIQUEUR SCOTCH", to sides, Made in England & Distillers marks to base, professional repair to minor chip on underside of spout, Very Good.
R\$400 (500 - 700)

166. JOHNNIE WALKER

6.25ins tall, rare yellow body, black print, "LOOK FOR JOHNNIE WALKER AND YOU'LL FIND HIM EVERYWHERE" to 2 panels and to other, "THE LABEL IS ON THE SQUINT" and to remaining, "THE BOTTLE'S ON THE SQUARE". James Green & Nephew pm, all gold gilt intact, crazing, Very Good.
R\$1200 (1300 - 1500)

167. JOHNNIE WALKER

5ins tall, rare yellow version "BORN 1820 JOHNNIE WALKER STILL GOING STRONG LOOK FOR JOHNNIE WALKER AND YOU'LL FIND HIM EVERYWHERE" on 2 panels, and to other "THE BOTTLE'S ON THE SQUARE" remaining panel "THE LABEL IS ON THE SQUINT". James Green & Nephew pm, age crazing, Very Good.
R\$1100 (1200 - 1300)

168. JOHNNIE WALKER

6.5ins tall, yellow body, "JOHNNIE WALKER", to 2 sides, Elischer pm, Mint.
R\$175 (200 - 250)

169. JOHNNIE WALKER

7.5ins tall, "JOHNNIE WALKER RED LABEL". Full size striding JW to sides. Wade Regicor and US importer marks to base, hairline to base of handle, Good
R\$75 (100 - 150)

170. HENRY WHITE

6.5ins tall, brown top and handle, cream body, black print, "HENRY WHITE & CO'S RED HEART RUM" to both sides and to front detailed picture of 2 Jamaican's either side of a shield. Frank Beardmore pm to base, professional restoration to the rim, Very Good



174

175

176



177

178

179



180

181

182



183

184

185



186

187

188

R\$900 (1000 - 1200)

171. WATSON'S
5.5ins tall, "WATSON'S NO 10 SCOTCH"
Overall blue lustre to body. Shelley pm,
light wear to lustre (as usual), Very Good.
R\$450 (500 - 600)

172. WATSON'S
5.75ins tall, "WATSON'S NO 10
SCOTCH" to sides, Made in England &
Distillers marks to base, an early jug, gold
trim virtually intact, Very Good.
R\$600 (700 - 900)

173. WATSON'S
4.5ins tall, "WATSON'S NO 10 SCOTCH"
to sides, Minton Regicor pm, minor chip
off edge of spout, red paint to centre
retouched, Good
R\$150 (175 - 200)

174. WATSON'S
6.5ins tall, "NO 10 SCOTCH WATSON'S"
on both sides of two tone blue jug. Late
Foley Shelley pm, wear to gilding on
handle and rim (as usual), chip to rim
repaired (good), light wear to high spots,
Good
R\$600 (700 - 800)

175. WRIGHT & GREIG
6ins tall, "WRIGHT & GREIGS RODERICK
DHU OLD HIGHLAND WHISKY", Wm
Brownlee pm, professional rim repair,
crazing, an early jug, Very Good.
R\$600 (700 - 900)

176. WHITE HORSE
6.25ins tall, "WHITE HORSE WHISKY"
with White Horse tm, Shelley pm. Wear to
over glaze silver gilt on handle & rim,
professional repair to chip on inside of
spout, Good.
R\$325 (350 - 400)

177. WHITE HORSE
5.5ins tall, "WHITE HORSE WHISKY"
with White Horse tm, Shelley pm. Wear to
over glaze silver gilt on handle & rim, Very
Good.
R\$375 (400 - 500)

178. WHITE HORSE
5ins tall, "WHITE HORSE WHISKY" with
White Horse tm, Shelley pm. Very minor
wear to silver gilt on handle & rim, Very
Good.
R\$425 (450 - 500)

179. WHITE HORSE
5ins tall, "WHITE HORSE WHISKY" to
other side, in oval, "WHITE HORSE
WHISKY ESTAB 1742" background in
Blue & White print of a Gent hunting to
sides. Shelley pm, fine crazing, hairlines to
handle, Very Good.
R\$700 (800 - 900)

GLASS DECANTERS ETC

180. AINSLIE'S
10.5ins tall to top of stopper, square cut,
white enamel "AINSLIE'S WHISKY",
some internal cloudiness, Very Good.
R\$125 (150 - 200)

181. KING'S LIQUEUR
9.75ins tall to top of stopper, white
enamel "KING'S LIQUEUR SCOTCH
WHISKY", with coloured Crown tm,
Very Good.
R\$225 (250 - 300)

182. DEWAR'S
10ins tall to top of stopper, etched gold
print "DEWAR'S SCOTCH WHISKY",
with Coat of Arms tm, 2 way pouring
action, Very Good.
R\$175 (200 - 250)

183. DUFF'S
6ins tall, etched print, "DUFF'S
LIQUEUR SCOTCH WHISKY", with
applied glass handle, Very Good.
R\$75 (80 - 120)

184. GLENFALLOCH
11.25ins tall to top of stopper, white
enamel "GLENFALLOCH HIGHLAND
WHISKY A&B MACKAY GLASGOW"
to one side and "R.W.THURLOW &
COLTD BRISBANE" to other, an early
pinch waisted decanter, pontil scar,
Very Rare, very Good.
R\$350 (400 - 500)

185. DEWAR'S OLD
10.5ins tall to top of stopper, etched
print "DEWAR'S OLD SCOTCH", an
unusual variation, wheel cut decora-
tion, light wear to gilding, Very Good.
R\$150 (200 - 300)

186. ENCORE
11.5ins tall to top of stopper, etched
(feint) print "THE ENCORE WHISKY
BERNARD & Co DISTILLERS LEITH",
pontil scar, Very Good.
R\$125 (150 - 200)

187. JOHN BEGG'S
10ins tall to top of stopper, two way
pouring action, white enamel lettering
"ROYAL WARRANTS FOR 60 YEARS
JOHN BEGG'S SCOTCH WHISKY"
with coloured Coat of arms, light
internal stains, Good.
R\$125 (150 - 200)

188. BULLOCHLADE
10.5ins tall to top of stopper, printed
lettering "BULLOCH. LADE & COs
FINEST OLD SCOTCH WHISKY" to
front "B.L. SCOTCH WHISKY" to rear,
Very Good.
R\$150 (175 - 225)



189 190 191 192



196 197 198



202 203 204

189. JOHN ROBERTSON

9ins tall to top of stopper, pinch waisted, etched print "JOHN ROBERTSON DUNDEE FINE OLD SCOTCH WHISKY", very minor nick to inside of rim near handle (hidden by stopper), Very Good. R\$175 (200 - 300)

190. D.C.L

7ins tall Cranberry glass jug with applied handle, white enamelled lettering "DCL GOLD MEDAL SCOTCH WHISKY" waisted jug with ground pontil, some touch ups to white letters, Very Good. R\$1100 (1250 - 1500)

191. D.C.L

5ins tall, with applied handle, Cranberry colouring, white enamelled letter to front with "D.C.L. GOLD MEDAL SCOTCH WHISKY", Very Good. R\$1200 (1500 - 1750)

192. DANIEL CRAWFORD

6ins tall, white enamelled print "DANIEL CRAWFORD 81 QUEEN ST GLASGOW" to one side and "FINEST VERY OLD SCOTCH WHISKY" to other, Very Good. R\$700 (800 - 1000)

193. McCALLUM

7ins tall dark Cranberry glass jug with applied glass handle, white enamelled lettering "D & J McCALLUM'S PERFECTION 20 YEARS OLD SCOTCH WHISKY", Very Good. R\$1200 (1500 - 1750)

194. ROTHMORE

9.5ins tall, Cranberry Glass, white enamel letters "ROTHMORE SCOTCH WHISKY", very elaborate multi fluted applied handle, pontil scar to base, 2 "hairline from rim alongside handle, Very Good. R\$800 (900 - 1200)

195. D.C.L

8.5ins tall, 3 way poring action Carafe, white enamelled words "D.C.L GOLD MEDAL SCOTCH WHISKY". A flowing swirling effect to the glass, Ground Pontil, part of the white enamel to the letter "D" is worn, Very Good. R\$800 (900 - 1200)

BREWERY ITEMS

196. SIMONDS

5.5ins tall, "SIMONDS READING PALE ALES & STOUTS", under spout, James Green Nephew, light stains to base area, fine crazing, Good. R\$175 (200 - 300)

197. WORTHINGTON'S

4ins tall, "WORTHINGTON" to sides with trade mark to front, L & Sons Ltd Hanley pm, hairline to rim by handle, Good. R\$200 (250 - 300)

198. HUNTSMAN

4.25ins tall, "HUNTSMAN BRAND YOUR DAILY ALE SIR ELDRIDGE, POPE AND CO LTD" to both sides with scene of dogs and horses hunting, James Green and Nephew pm, minor chip off bottom edge, Very Good. R\$275 (300 - 350)

199. IND COOPE'S

6ins tall, "IND COOPE BURTON ALES" to sides, Mintons pm, blue over glaze trim to rim & handle has faded, Very Good. R\$300 (350 - 400)



193 194 195



199 200 201



205 206 207

200. IND COOPE'S

5.25ins tall, "ASK FOR IND COOPE ALES & STOUT", Mintons pm, some paint spots to rim retouched, Good R\$200 (250 - 300)

201. LION BEER

6ins tall, "LION BIER" to one side and "LION BEER" to other, with Lion tm, Drostdy Ware South Africa pm, Very Good. R\$175 (200 - 250)

202. MANSFIELD

4ins tall, "MANSFIELD ALES WORTH HUNTING FOR" with huntsman raised glass, to sides, Clifton Cottle pm, Very Good R\$275 (300 - 400)

203. MANSFIELD

3.75ins tall, "MANSFIELD ALES WORTH HUNTING FOR" with huntsman to one side, and "MANSFIELD BREWERY CO LTD GOLDEN DROPALE BITTER BEER AND MILD ALE" to other, Made in England, light wear to black print, Very Good. R\$275 (300 - 400)

204. OFFILERS'S

3.75ins tall, "OFFILERS ALES" to front and pictures of King George VI and Queen Elizabeth to one side with Crown and flags to the other, no pm, fine crazing, Very Good. R\$325 (350 - 400)



208

209

210



214

215

216



221

222

223

205. CHARRINGTON'S

9ins tall, toby jug style, "CHARRINGTON'S TOBY" to plinth, this is a musical jug by Crown Devon (working), Very Good.
R\$400 (500 - 600)

206. DOUBLE DIAMOND

8ins tall, china figure of a striding gent, "A DOUBLE DIAMOND WORKS WONDER", to sides, Beswick pm, missing hat stopper, Very Good.
R\$225 (250 - 300)

207. ALLSOPP'S

5ins tall, "ALLSOPP'S" with Red Hand tm to one side and to other picture of 2 Gents with verse about Allsopp's Ale, Royal Cauldron pm, Very Good.
R\$175 (200 - 300)

208. MITCHELL'S & BUTLER

4ins tall, "MITCHELLS & BUTLERS GOOD HONEST BEER", Made in England pm, Very Good.
R\$150 (200 - 300)

209. BUTLER'S

3.5ins tall, "BUTLER'S WOLVERHAMPTON" with picture of a Gent having a drink to sides, Wade Regicor pm, Very Good.
R\$125 (150 - 200)

210. TENNANT'S

4.75ins tall, "TENNANT'S LAGER & STOUT" to sides with "T" tm, no pm, hairline to rim, crazing, light wear to print, Good.
R\$50 (75 - 125)

211. FLOWER'S

5ins tall "FLOWERS PALE ALE" with

portrait of a gent in a dais to both sides, Associated Potteries pm, Fine crazing, Very Good.
R\$350 (400 - 500)

212. WALKER'S FINE ALES

8.5ins tall, to one side "WITH COMPLIMENTS FROM ERNEST SILVERWOOD CASH SUPPLY STORES RYHILL WALKERS FINE ALES WAKEFIELD", to other multicoloured picture of King George V & Queen Mary (1911 Coronation), no pm, repairs to spout & rim, crazing, Good.
R\$500 (600 - 700)

213. USHER'S

5ins tall, "USHERS TROWBRIDGE ALES" to sides, with sword & key tm, Minton Regicor pm, crazing, Very Good.
R\$275 (400 - 600)

214. JENNER 1

6.75ins tall, elaborate decoration with picture of King George V & Queen Mary Coronation 1911, «R & H JENNER & SONS SOUTH LONDON BREWERY», Royal Doulton pm, minor nick to spout professionally restored (black light only), a very rare jug, Very Good.
R\$1500 (1750 - 2000)

215. JENNER 2

6.75ins tall, elaborate decoration with a picture of a King seated on his throne hold a jug of ale and his tipstaff in other, words «A QUART OF ALE IS A DISH FOR A KING JENNERS ALES SOUTH LONDON BREWERY R & H JENNER & SONS», Royal Doulton pm, a minor chip off rim by handle has been professionally restored (black light only), Very Rare not seen this one before, very Good.
R\$1500 (1750 - 2000)



211

212

213



217

218

219

220

216. JENNER 3

6.75ins tall, elaborate wheatsheaf decoration, a verse celebrating Jenner's Sparkling Ale, dated 1905, «R & H JENNER & SONS SOUTH LONDON BREWERY», Royal Doulton pm, minor nick to spout professionally restored (black light only), a very rare jug, Very Good.
R\$1200 (1500 - 1800)

217. REID'S 1

4.75ins tall, "REID'S STOUT" to both sides, "WATNEY COMBE REID AND CO LTD STAG BREWERY LONDON SW1" under spout, Bursley Ware pm, age crazing, Very Good.
R\$225 (250 - 300)

218. REID'S 2

4.5ins tall, "REID'S STOUT" to both sides, "WATNEY COMBE REID AND CO LTD STAG BREWERY LONDON SW1" under spout, James Green Nephew pm, age crazing (needs a clean), Very Good.
R\$225 (250 - 300)

219. WATNEY'S

4.25ins tall, "WATNEY'S ALE" to sides, "WATNEY COMBE REID Stag BREWERY LONDON SW1" under spout, James Green Nephew pm, hairline to rim by spout, crazing, Good.
R\$125 (150 - 200)

220. ROSS'S

4.25ins tall, "ROSS'S GINGER ALE" to one side, "ROSS'S SODA WATER" to other, "BELFAST" to both sides of rim, treacle glaze, G. A. Campbell and Son pm, age crazing, rim repair (good), Good
R\$125 (150 - 200)

221. WHITBREAD 1

5.5ins tall, 2 tone stoneware, "WHITBREAD'S ALE & STOUT IN BOTTLE" under spout, Royal Doulton pm, a rare variation, Very Good.
R\$600 (700 - 900)

222. WHITBREAD 2

4.5ins tall, 2 tone stoneware tankard style jug, "WHITBREAD'S ALE & STOUT", with Stag tm, to sides, Royal Doulton pm, another rare variation, Very Good.
R\$600 (700 - 900)

223. WHITBREAD 3

4.75ins tall, 2 tone stoneware "WHITBREADS ALE & STOUT IN BOTTLE" Royal Doulton pm, Near Mint.
R\$450 (500 - 600)



224 225 226 227



231 232 233 234



238 239 240



228 229 230



235 236 237



241 242 243

224. COURAGE'S
4.75ins tall, with handle, Blue top, "COURAGE'S ALTON PALE ALE" on one side and "COURAGE'S EXTRA STOUT", Royal Doulton pm, Very Good.
R\$550 (600 - 700)

225. BODDINGTON'S
4.5ins tall, stoneware jug, applied decoration "BODDINGTON'S BEER & STOUT", with picture of a barrel tm, Royal Doulton pm, a shrinkage crack to mid section of handle (mfg), Very Good.
R\$450 (500 - 600)

226. GREENE KING
4.5ins tall, glazed green on the outside and blue in the inside, applied cameo with "GREENE KING 1799 FINE SUFFOLK ALES" Royal Doulton England pm, Very Good.
R\$200 (225 - 300)

227. FARMER ALE
4.5ins tall, with handle, all over mottled effect, embossed words "FARMER ALE" on one side and other "STYLE & WINCH LTD", Royal Doulton pm, Very Good. (this was lot 528 from March 06)
R\$175 (200 - 300)

228. CANNON IMPERIAL
4.75ins tall, "SPECIAL CANNON IMPERIAL SPOUT IN BOTTLE AND ON DRAUGHT" to both sides, full glass of frothing stout pictured under spout, John Haddock and Sons Royal Vitreous England pm, light crazing, Very Good.
R\$900 (1000 - 1200)

229. MARSTON'S
5.25ins tall, "MARSTON'S BURTON ALES" to both sides, with knotted rope trade mark, cobalt blue to base and neck, T G Green and Co Ltd pm, A rare early Brewery jug, professional rim repair, Very Good
R\$600 (700 - 900)

230. FLOWER'S
4.5ins tall "FLOWERS ALE'S & STOUT" with portrait of a gent, Royal Doulton pm, crazing, minute nibbles to edge of spout, Good.
R\$275 (300 - 400)

231. YOUNGER 1
4ins tall, "W m YOUNGER'S NO 3 SCOTCH ALE" to sides with picture of the Brewery & under spout "SCOTCH ALE", Royal Doulton, Very Good
R\$225 (250 - 300)

232. YOUNGER 2
4.75ins tall, to sides picture of Wm Younger "O'i BE 101 AND YOUNGER EVERY DAY", under spout "WM YOUNGER NO 3 SCOTCHALE", with picture of the Brewery, Royal Doulton pm, crazing, Very Good.
R\$225 (250 - 300)

233. YOUNGER 3
3.75ins tall, "W m YOUNGER'S NO 3 SCOTCH ALE" to sides with picture of the Brewery & under spout "NO 3", James Green Nephew pm, Very Good
R\$225 (250 - 300)

234. YOUNGER 4
3.25ins tall, "GET YOUNGER EVERY DAY" to sides with picture of Mr Younger

& "WM YOUNGERS SCOTCHALE" under spout, Royal Doulton pm, Very Good.
R\$225 (250 - 300)

235. BARCLAY'S
4.5ins tall, "BARCLAY'S LAGER BARCLAY'S LONDON LAGER", with orange shield tm, Clifton Cottle pm, fl ne crazing, Very Good.
R\$450 (500 - 600)

236. FRED SMITH'S
4.5ins tall, "FREDK. SMITH'S ASTON MODEL ALES" too one side and to other multicolour image of a Gent cheeks aglow studying a glass of Ale, Causton pm, professional repair to spout, Very Good.
R\$300 (400 - 500)

237. COURAGE'S
4ins tall, "COURAGE ALTON PALE ALE" to one side & "COURAGE NUT BROWN ALE", with Rooster tm, Associated Potteries, dirty crazing, Good.
R\$325 (350 - 450)

238. IND COOPE
4.75ins tall, "IND COOPE ALLSOPP", with picture of a building on one side & to other a Red Hand, Mintons pm,
R\$350 (400 - 500)

239. BISQUIT BRANDY
11.5ins tall, large figural jug, "BISQUIT'S BRANDY", French pm to base, hand painted, chip to edge of spout, Very Good.
R\$300 (400 - 500)



244

245

246



250

251

252



256

257

258

240. GUINNESS BULLDOG

5.75ins tall, modelled figure of a seated Bulldog, "BULLDOG GUINNESS ROBT PORTER & Co" to one side and "BULLDOG PILSENER ROBT PORTER & Co", Royal Doulton pm, repairs to left front leg (good), Good.
R\$1100 (1200 - 1500)

241. GUINNESS 1

4.5ins tall, blue and black print, "BULLDOG GUINNESS" to two sides and "AKNOWLEDGED THE FINEST STOUT IN THE WORLD" to other 2 sides, Royal Doulton pm, Minute nick off tip of spout, Very Good.
R\$400 (450 - 500)

242. GUINNESS 2

6.5ins tall, "BULLDOG BOTTLED BEER ROBERT PORTER & COLIMITED LONDON EXPORT BOTTLERS" with picture of a British Bull Dog standing to one side. And to other full size picture of a bottle of Robert Porter Beer, Royal Doulton pm, minor nick off spout professionally repaired (black light), a very rare desirable jug, Very Good.
R\$2300 (2500 - 3000)

243. BUGLE BRAND

7ins tall, "BUGLE BRAND BASS ALE" to one side with Hunting Horn & red Triangle trademarks. To other side "BUGLE BRANDS GUINNESS STOUT, with Hunting Horn & Guinness Harp trademarks. To front a modelled bottle of "EAST INDIA PALE ALE M.B.FOSTER & SONS LONDON", Associated potters pm, a very rare multi brand jug, has dirty crazing and a hairline by spout, Very Good.
R\$800 (1000 - 1200)

244. BOSUN BILL

5ins tall, modelled head and words in relief "BOSUN BILL BEENLEIGH RUM", crudely made from terracotta pottery, no pm, Very Good.
R\$300 (350 - 400)

245. SEPPELT'S

4.75ins tall, "SEPPELT'S FAMOUS WINES" to one side and "CHATEAU TANUNDA BRANDY" to other and to front white print "SEPPELT". Picture of labelled bottles to sides, no pm, light wear, Good
R\$200 (250 - 300)

246. GOLD FLAKE

4.5ins tall, "WILLS'S GOLD FLAKE CIGARETTES" to sides, with orange trim, marks to base look like FTC entwined, crazing, Very Good.
R\$200 (225 - 275)

ASHTRAYS STRIKERS ETC**247. ARMY CLUB 1**

3.75ins tall x 5ins wide, matchbox holder, "ARMY CLUB CIGARETTES" to sides of plinth, to holder "ARMY CLUB SANDHURST SIZE", with colourful shield tm on one side. A picture of an Army Captain to other, Empire Ware pm, some stains, crazing and a hairline where holder meets base, a rare item, Good.
R\$150 (175 - 250)

248. ARMY CLUB 2

5ins tall, modelled figure of an Army Captain, with words "ARMY CLUB" to rear, Royal Doulton pm, crazing, Very Good.
R\$350 (400 - 600)

249. DEWAR'S

4ins tall, stoneware matchstriker, raised words "DEWAR'S PERTH WHISKY" to plinth and "JOHN DEWAR & SONS" to top section, Doulton Lambeth pm, a chip/ding to top of rim, Good.
R\$150 (200 - 250)

250. DEWAR'S

2.75ins tall x 6ins dia, raised letters "DEWAR'S" to plinth and top section, Royal Doulton pm, repair to top of rim (good), Good.
R\$125 (150 - 200)



247

248

249



253

254

255

251. FLOWER'S

3.75ins tall by 9ins long, with modelled figure of a Gent with open book, "FLOWERS KEG BITTER BREWMASTER", Carlton Ware pm, Very Good.
R\$100 (125 - 150)

252. McCALLUM

4.75ins long Deco shaped "McCALLUM'S PERFECTION SCOTS WHISKY" to both sides of pink coloured ashtray with Chieftain to underside of cigarette rest, Royal Doulton pm, Very Good.
R\$125 (150 - 200)

253. SHIELD

5ins square, "BLACK & WHITE SCOTCH WHISKY", with central picture of a Shield, Made in England pm, Very Good.
R\$60 (75 - 125)

254. BEGGING DOGS

5ins square, "BUCHANAN'S BLACK & WHITE", with central picture of Begging Dogs with pink tongues, Made in England pm, professional repair to under side chip, Very Good.
R\$75 (90 - 125)

255. DOGS FACING

5ins square, "BLACK & WHITE SCOTCH WHISKY", with central picture of 2 dogs facing each other, Made in England pm, Very Good.
R\$75 (90 - 125)

256. CHECKERBOARD

5ins square, "BLACK & WHITE SCOTCH WHISKY", with central picture of a Checker board, Made In England pm, very Good.
R\$75 (90 - 125)

257. AINSLIE'S

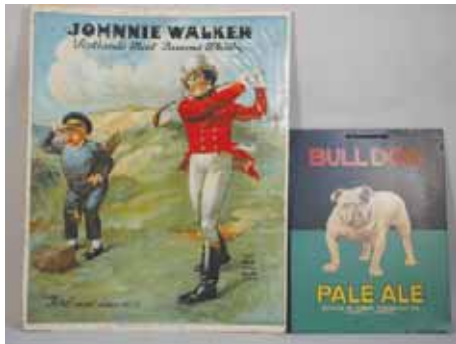
5.75ins x 3.25ins change tray, "AINSLIE'S WHISKY", with central picture of Edinburgh Castle, Copeland pm, Very Good.
R\$175 (200 - 250)

258. WATSON'S 1

7ins wide, "WATSON'S NO 10 SCOTCH WHISKY", with central picture of Loch Fyne, Distillers marks to base, Very Good.
R\$175 (200 - 300)



259 260 261



268 269



276 277 278

259. WATSON'S 2

7ins wide, "WATSON'S NO 10 SCOTCH WHISKY", with central picture of St Heliers, Distillers marks to base, Very Good.
R\$175 (200 - 300)

260. WATSON'S & GREER'S

4.5ins x 3.75ins oblong shaped change tray, "WATSON'S No10 SCOTCH", distillers marks to base, top left corner has been repaired (good), plus 4.25 dia, "GREER'S O.V.H SCOTCH WHISKY", Shelley pm, Very Good. (2)
R\$90 (125 - 150)

261. SUTTON & WORTHINGTON

4.75ins dia, "SUTTON CARDEN DRY GIN LONDON", Associated Potteries, wear to print, hairline to rim, plus 5ins dia "WORTHINGTON", Minton pm, Very Good. (2)
R\$50 (60 - 90)

262. GAELIC & DEWAR'S

5.25ins dia, "GAELIC OLD SMUGGLER WHISKY", Royal Doulton pm, age crazing, fleabite nick off edge, Very Good, plus 5ins dia "DEWAR'S WHISKY", Minton pm, Very Good. (2)
R\$100 (125 - 150)



262 263 264



270 271 272



279 280 281

263. USHER'S O.V.G

3.5ins dia x 2.75ins tall, "USHER'S SPECIAL RESERVE WHISKY", with Kipling Verse and picture of a WW1 Soldier, age crazing & stress lines, Good.
R\$75 (100 - 150)

264. OLD SMUGGLER

3.5ins dia x 3ins tall, "GAELIC OLD SMUGGLER WHISKY" with picture of a bottle to rear, Causton pm, repair to inside edge, faded print.
R\$30 (40 - 60)

265. BEGGING DOGS

4ins dia x 2.5ins tall, beehive shape, "BUCHANAN'S BLACK & WHITE", with picture of the Begging Dogs with pink tongues, Shelley pm, 2 hairlines from base running up one side, Good.
R\$125 (150 - 200)

266. McCALLUMS

4.25ins x 2.5ins glass paperweight "D & J McCALLUM'S PERFECTIONS WHISKY THE BEST SCOTCH" chipping to base edge. Plus 4.5ins x 3.25ins "D & J



265 266 267



273 274 275



282 283 284

McCALLUM'S PERFECTIONS WHISKY" glass ashtray, chip off base edge, Good (2)
R\$45 (50 - 75)

267. DAWSON'S

5.25ins dia x 3.5ins tall, matchbox holder "DAWSON'S", with "ABCD" around holder with more words, Wedekind London pm, rust stains to one edge, Very Good.
R\$150 (175 - 250)

268. JOHNNIE WALKER

18.5ins tall x 15ins wide, celluloid advertising sign mounted on board, "JOHNNIE WALKER SCOTLAND'S MOST FAMOUS WHISKY", picture of JW playing Golf, minor wrinkles to surface, Very Good.
R\$600 (750 - 1000)

269. BULLDOG

12ins x 9.25ins, tinsplate sign, "BULLDOG PALE ALE", with picture of a standing Bulldog, very minor rust to bottom right corner, stunning colours, Very Good.
R\$300 (350 - 400)



285 286 287
FIGURINES

270. CATTO'S

12ins tall, ceramic figure, "CATTO'S THE SPORTSMAN SCOTCH WHISKY", Beswick pm, Very Good.
R\$850 (900 - 1200)

271. SPEY ROYAL

12.5ins tall, ceramic figure, "GILBEY'S 8 YEAR OLD SPEY ROYAL", no makers, Very Good.
R\$300 (400 - 500)

272. SQUIRE'S

10ins tall, ceramic figure, "SQUIRE'S GIN", Charles Tresie London makers, Very Good.
R\$450 (500 - 600)

273. QUEENANE

9.25ins tall, plastic, raised letters, "QUEEN ANNE SCOTCH WHISKY", Hancor model makers, Very Good.
R\$250 (300 - 350)

274. ST. LEGER

12ins tall x 11ins wide, solid plaster, raised letters "ST LEGER SCOTLAND'S FINEST LIGHT & DRY SCOTCH", named after the famous horse race, the very first St Leger Stakes was run on 24 September 1776. A rare figure, paint work has been retouched professionally, Very Good.
R\$900 (1100 - 1500)

275. DOUBLE DIAMOND

7.75ins tall, plastic figure, "JOIN THE DOUBLE DIAMOND CLUB", some fading to red, Good.
R\$50 (75 - 125)

276. FLOWER'S

10.25ins tall, RUBBEROID, raised gold letters "FLOWERS KEG BITTER", an early figure in Very Good condition.
R\$400 (500 - 600)

277. BULLDOG

7.5ins tall x 7.5ins wide, solid plaster, raised letters to sides "BULLDOG GUINNESS", minor repairs to corner damages, Very Good.
R\$350 (400 - 600)



288 289 290

278. BULOCHLADE

6ins tall, solid plastic, "BL GOLD LABEL SCOTCH WHISKY", Very Good.
R\$125 (150 - 200)

279. LORD CALVERT

15ins tall, solid plaster, "LORD CALVERT", distillers label to rear, chip off bottom of red coat to rear, Good.
\$200 (250 - 350)

280. AULD SHEP

9ins tall, rubberoid, raised letters "AULD SHEPP SCOTCH WHISKY", some paint work retouched, Very Good.
R\$300 (400 - 500)

281. DEWAR'S

9.5ins tall, rubberoid, "DEWAR'S SCOTCH WHISKY", some shrinkage/paint loss, Good.
R\$45 (60 - 90)

282. BEEFEATER 1

17ins tall, ceramic figure with metal staff, "THE BEEFEATER YEOMAN", Coronetti Italy pm, Very Good.
R\$125 (150 - 200)

283. BEEFEATER 2

A huge 24ins tall, rubberoid, "BEEFEATER GIN", an early version, figure is leaning forward, top of staff broken (taped on), considering age and size, Very Good.
R\$300 (400 - 500)

284. DRAMBUIE

13.5ins tall, smaller version to lot 449, rubberoid figure, "DRAMBUIE" in raised letters to 3 sides, Very Good.
R\$125 (150 - 200)

285. FLOWERS

13.5ins tall, rubberoid, "BREWMASTER BREWED BY FLOWERS", some shrinkage to drinking arm, overall light shrinkage, Very Good.
R\$145 (175 - 225)

286. HENNESSY

14.5ins tall, plastic, "HENNESSY", missing his cane, Very Good.
R\$100 (125 - 150)



291 292 293

287. MYERS

16.5ins tall, rubberoid figure, paper label to front "MYERS RUM", raised letters to plinth "MAKE MINE MYERS", minor shrinkage, Very Good.
R\$250 (300 - 400)

288. JOHNNIE WALKER

15.5ins tall, plastic, "JOHNNIE WALKER SCOTCH WHISKY", some wear to plinth area, Good.
R\$90 (125 - 150)

289. TEACHERS

15.5ins tall, rubberoid with plastic board, "TEACHERS HIGHLAND CREAM", and in raised letters to base "TEACHER'S", Very Good.
R\$300 (400 - 500)

290. KING GEORGE IV

14.5ins tall, rubberoid figure, "KING GEORGE IV SCOTCH WHISKY", shrinkage to mid section, plinth has a split to one side, Good.
R\$75 (100 - 150)

291. HENNESSY

9ins tall, plastic figure of the famous St Bernard Dog, "COGNAC HENNESSY", Very Good.
R\$150 (175 - 200)

292. DANDIE DINMONT

10ins tall, standing on a wooden box with printed words "DANDIE DINMONT SCOTCH WHISKY", to sides, figure is made from plastic, dog has some wear to paint, a very rare and desirable figure, Very Good.
R\$1250 (1300 - 1500)

293. BLACK & WHITE

9ins tall by 12ins wide, plastic, raised letters "BLACK & WHITE SCOTCH WHISKY", Very Good.
R\$90 (100 - 125)



294

295

296



303

304

305



306

307

308

294. DEWAR'S

13.5ins tall, rubberoid figure, "DEWAR'S WHITE LABEL SCOTCH WHISKY", Very Good.
R\$125 (175 - 200)

295. GRANT'S

13.5ins tall, solid plaster, raised letters "GRANT'S 8", speck of paint missing on the Kilt, minor damage to rear corner, Very Good.
R\$400 (450 - 550)

296. MACKINLAY'S

14.25ins tall, rubberoid on wooden base, "MACKINLAY'S SCOTCH WHISKY", some damage to painted letters, bottle label missing, some paint retouched, Good.
R\$150 (175 - 225)

297. FLOWER'S

5.25ins tall, ceramic figure, "BREWMASTER BREWED BY FLOWERS", no pm, very rare small size, Very Good.
R\$300 (350 - 450)

298. CAPTAIN MORGAN

4.75ins, plastic, raised letters "CAPTAIN MORGAN RUM" all around plinth, Very Good.
R\$50 (60 - 90)
20

299. TRUMAN'S

7ins tall, solid plastic, "TRUMAN'S BREWERS OF GOOD BEER FOR OVER 300 YEARS", Very Good.
R\$125 (150 - 200)

300. PIPER SCOTCH

6.5ins tall, rubberoid figure, "PIPER EXPORT", Very Good.
R\$125 (150 - 200)

301. DEWAR'S 1

A huge 21ins tall, rubberoid figure of the Highlander for "DEWAR'S WHITE LABEL", on a wooden base with provision for a bottle of scotch, minor wear, Very Good.
R\$500 (600 - 800)

302. DEWAR'S 2

21.5ins tall, rubberoid figure on wooden base, label to front has been replaced, minor paint touch ups, an early large figure, Very Good.
R\$400 (500 - 600)



297

298

299

300



301

302

303. CLUNY

9ins tall, rubberoid figure, "MACPHERSON'S CLUNY SCOTCH WHISKY", early figure of a Scotsman leaning on a wall with a cat. The very tip of the man's cap is missing, otherwise Very Good.
R\$250 (300 - 400)

304. BLACK & WHITE

10ins tall x 11ins wide, cast metal, "BLACK & WHITE WHISKY", dogs have glass eyes, paintwork retouched, light wear, Very Good.
R\$175 (200 - 300)

305. GRANT'S

10ins tall, rubberoid figure, "GRANT'S SCOTCH WHISKY", some shrinkage retouched, Very Good.
R\$150 (200 - 300)

306. KING GEORGE IV

8ins tall, hard plastic figure of a bust of "KING GEORGE IV OLD SCOTCH WHISKY", lettering is worn, Very Good.
R\$90 (100 - 125)

307. OLD SMUGGLER

11.5ins tall, rubberoid figure, "OLD SMUGGLER SCOTCH WHISKY", AN EARLY FIGURE IN Very Good condition.
R\$400 (450 - 550)

308. KING GEORGE IV

8ins tall, hard plastic figure of a bust of "KING GEORGE IV OLD SCOTCH WHISKY", part of letter G in George is worn, paint work retouched, Very Good.
R\$150 (200 - 250)

